



The Brazilian Journal of INFECTIOUS DISEASES

www.elsevier.com/locate/bjid



Clinical image

Cutaneous loxoscelism: extensive nonulcerated livedoid plaque



Natalie Torres*, Monica Rueda

Hospital Nacional Dos de Mayo, Lima, Peru

ARTICLE INFO

Article history:

Received 12 September 2016

Accepted 8 October 2016

Available online 27 December 2016

Loxoscelism is a disease caused by the bite of a spider of the genus *Loxosceles*, which causes a necrotic dermatologic injury through the enzyme sphingomyelinase D.¹ It is a public health problem in South America, especially in Argentina, Brazil, Chile, and Peru, where *Loxosceles laeta* is one of the most common spider and presumably the most toxic. The clinical picture may present as cutaneous loxoscelism or, less frequently, cutaneous-visceral or systemic loxoscelism.² The latter may be ruled out after the first 24 h.³ A 69-year-old male, who was attacked by a 3-cm brown spider, presented local pain and edema around the site of the bite after 14 h (Fig. 1). The patient was put on corticosteroids and antihistaminics, but the lesion and the pain increased in following hours. The patient was referred to our hospital 3 days thereafter;

at admission we observed an extensive purpuric plaque from left ribcage to the sternum region, irregular, with pale, congestive, and ecchymotic areas. At the upper end of the plaque, we observed a black crust of 1 cm of diameter. It has not changed until the time of discharge at the 7th day of hospitalization and there were no other findings consistent with systemic damage. Cutaneous loxoscelism is a benign and self-limited injury, associated with edema and erythema after 6–8 h. It usually produces areas of hemorrhage, vasoconstriction and ischemia around the bite called livedoid plaque, as shown in this case, but some of the victims progress to a necrotic ulcer.⁴ Therefore, loxoscelism should be closely monitored for its ability to produce cutaneous ulceration or to develop systemic involvement.

* Corresponding author.

E-mail address: torrespnat.14@gmail.com (N. Torres).

<http://dx.doi.org/10.1016/j.bjid.2016.10.017>

1413-8670/© 2016 Sociedade Brasileira de Infectologia. Published by Elsevier Editora Ltda. This is an open access article under the CC BY-NC-ND license (<http://creativecommons.org/licenses/by-nc-nd/4.0/>).

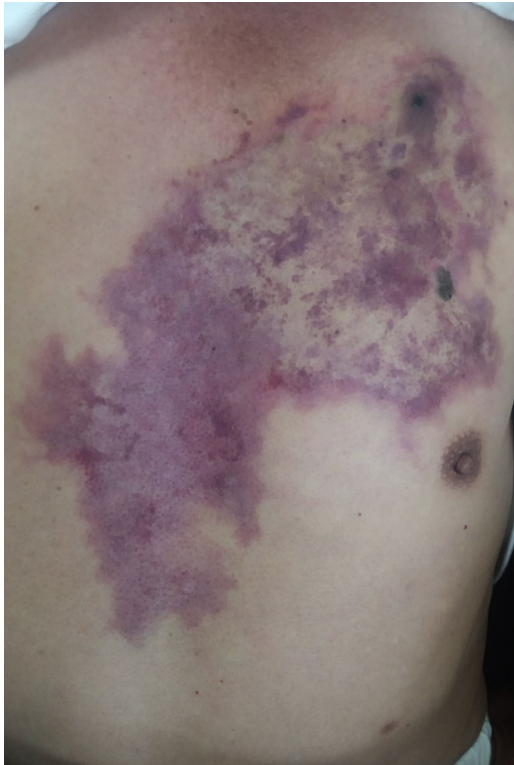


Fig. 1 – Livedoid plaque on chest showing pale, congestive and ecchymotic areas resulting from ischemic and hemorrhagic phenomena after *Loxosceles laeta* bite.

Conflicts of interest

The authors declare no conflicts of interest.

REFERENCES

1. Swanson D, Vetter R. Loxoscelism. *Clin Dermatol.* 2006;24:213–21.
2. Manriquez JJ, Silva S. Loxoscelismo cutáneo y cutáneo-visceral: revisión sistemática. *Rev Chil Infect.* 2009;26:420–32.
3. Mendoza A, Cabezas C. Loxoscelismo: evaluación clínica, tratamiento y prevención. *Rev Peru Enferm Infecc Trop.* 2006;5:2–8.
4. De la Barra P, Vial V, Labraña Y, Alvarez AM, Seguel H. Loxoscelismo cutáneo predominantemente edematoso, a propósito de un caso. *Rev Chil Infectol.* 2015;32:467–71.