



## IMAGES IN INTENSIVE MEDICINE

### Anomalous position of femoral dialysis catheters

### Posición anómala de los catéteres femorales para diálisis



D. Arias-Verdu, G. Seller-Pérez, M.E. Herrera Gutiérrez\*

UCI Hospital Universitario Carlos Haya, Málaga, Spain

Received 18 October 2015; accepted 15 November 2015

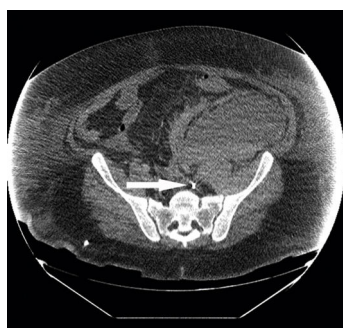


Figure 1

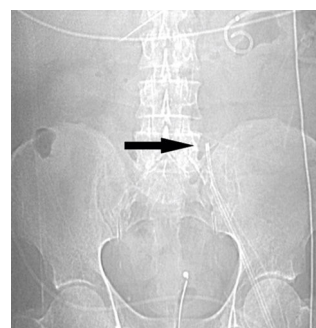


Figure 2

A patient underwent CRRT through a left femoral vein catheter (34 cm–13.5 F). Immediately after the insertion we detected problems in the circuit blood flow and the patient deteriorated. A CT scan showed the tip of the catheter in the left lumbar vein beside a retroperitoneal haematoma (Fig. 1). Another patient (same catheter and insertion technique) showed persistent blood flow problems and in a CT scan the catheter was detected in an accessory left hemiacygos vein and already visible in the plain abdominal x-ray (Fig. 2). Because presumably an eco-directed insertion would not have prevented these anomalous locations, in the event of serious flow problems, a radiologic exploration can help ruling out this unusual and scarcely reported malposition that demands immediate withdrawal of the catheter.

### Conflict of interest

The authors declare no conflict of interest concerning this manuscript.

\* Corresponding author.

E-mail address: [mehguci@gmail.com](mailto:mehguci@gmail.com) (M.E. Herrera Gutiérrez).