

Original article

Prevalence of Atrial Fibrillation in Spain. OFRECE Study Results

Juan José Gómez-Doblas,^{a,*} Javier Muñoz,^b Joaquín J. Alonso Martín,^c Gustavo Rodríguez-Roca,^d José María Lobos,^e Paula Awamleh,^c Gaietà Permanyer-Miralda,^f Francisco Javier Chorro,^g Manuel Anguita,^h and Eulalia Roigⁱ on behalf of the OFRECE study collaborators[◇]

^aServicio de Cardiología, Hospital Clínico Universitario Virgen de la Victoria, Málaga, Spain

^bInstituto Universitario de Ciencias de la Salud, Universidad de A Coruña, A Coruña, Spain

^cServicio de Cardiología, Hospital Universitario de Fuenlabrada, Fuenlabrada, Madrid, Spain

^dCentro de Salud La Puebla de Montalbán, Toledo, Spain

^eCentro de Salud Jazmín, Madrid, Spain

^fServicio de Cardiología, Hospital Universitario Vall d'Hebron, Barcelona, Spain

^gServicio de Cardiología, Hospital Clínico Universitario de Valencia, Valencia, Spain

^hServicio de Cardiología, Hospital Reina Sofía, Córdoba, Spain

ⁱServicio de Cardiología, Hospital de Sant Pau, Barcelona, Spain

Article history:

Received 5 March 2013

Accepted 19 July 2013

Available online 25 November 2013

Keywords:

Atrial fibrillation

Prevalence

Epidemiology

ABSTRACT

Introduction and objectives: Atrial fibrillation is associated with substantial morbidity and mortality and both its incidence and prevalence are high. Nevertheless, comprehensive data on this condition in Spain are lacking. The aim of this study was to estimate the prevalence of atrial fibrillation in Spain.

Methods: A cross-sectional study was conducted in the general Spanish population older than 40 years. Two-stage random sampling was used, in which first-stage units were primary care physicians randomly selected in every Spanish province and second-stage units were 20 randomly selected persons drawn from each participating physician's assigned population. The reported prevalence was standardized for the age and sex distribution of the Spanish population. The electrocardiogram recordings were read centrally.

Results: Overall, 8343 individuals were evaluated. The mean age was 59.2 years (95% confidence interval, 58.6-59.8 years), and 52.4% of the participants were female. The overall age-adjusted prevalence of atrial fibrillation was 4.4% (95% confidence interval, 3.8-5.1). Prevalence was similar in both sexes, men 4.4% (3.6-5.2) and women 4.5% (3.6-5.3), rising with increasing age older than 60 years. In patients older than 80 years, the prevalence was 17.7% (14.1-21.3). In 10% of patients an unknown atrial fibrillation was diagnosed.

Conclusions: The prevalence of atrial fibrillation in the general Spanish population older than 40 years is high, at 4.4%. The prevalence is similar in both sexes and rises steeply above 60 years of age. It is estimated that there are over 1 million patients with atrial fibrillation in the Spanish population, of whom over 90 000 are undiagnosed.

© 2013 Sociedad Española de Cardiología. Published by Elsevier España, S.L. All rights reserved.

Prevalencia de fibrilación auricular en España. Resultados del estudio OFRECE

RESUMEN

Introducción y objetivos: La fibrilación auricular se asocia con elevadas morbilidad y mortalidad, y tanto su incidencia como su prevalencia son altas. No obstante, hay escasos datos poblacionales sobre su epidemiología en España. El objetivo de este estudio es estimar la prevalencia de fibrilación auricular en España.

Métodos: Estudio transversal en población española de 40 o más años. Se realizó un muestreo en dos etapas, una primera selección aleatoria de médicos de atención primaria de cada provincia española y, en segundo lugar, se seleccionó aleatoriamente a 20 individuos de la población asignada a cada médico participante. La prevalencia se ponderó por edad, sexo y área geográfica. Se realizó una lectura centralizada de los registros electrocardiográficos.

Resultados: Se evaluó a 8.343 personas (media de edad, 59,2 [intervalo de confianza del 95%, 58,6-59,8] años; el 52,4% mujeres). La prevalencia total de fibrilación auricular fue del 4,4% (intervalo de confianza del 95%, 3,8-5,1). La prevalencia fue similar en varones (4,4% [3,6-5,2]) y mujeres (4,5% [3,6-5,3]) y se incrementa progresivamente a partir de los 60 años de edad. En los mayores de 80 años, la prevalencia fue del 17,7% (14,1-21,3). En un 10% de pacientes se diagnosticó una fibrilación auricular no conocida.

Palabras clave:

Fibrilación auricular

Prevalencia

Epidemiología

SEE RELATED ARTICLE:

<http://dx.doi.org/10.1016/j.rec.2014.01.001>, Rev Esp Cardiol. 2014;67:249-50.

* Corresponding author: Servicio de Cardiología, Hospital Universitario Virgen de la Victoria, Campus de Teatinos s/n, 29010 Málaga, Spain.

E-mail address: jjgomezdoblas@secardiologia.es (J.J. Gómez-Doblas).

◇ The complete list of contributors is included in the [Appendix](#).

Conclusiones: La prevalencia de fibrilación auricular en la población general española mayor de 40 años es elevada, del 4,4%. La prevalencia es similar en varones y mujeres y se incrementa escalonadamente a partir de los 60 años. Se estima en más de 1 millón de pacientes con fibrilación auricular en la población española, de los que más de 90.000 están sin diagnosticar.

© 2013 Sociedad Española de Cardiología. Publicado por Elsevier España, S.L. Todos los derechos reservados.

Abbreviations

AF: atrial fibrillation
ECG: electrocardiogram
PC: primary care

INTRODUCTION

Atrial fibrillation (AF) is the most common arrhythmia in Western countries and is associated with high mortality and morbidity.^{1,2} It is the leading cause of embolic events and is also associated with episodes of heart failure, cognitive impairment, and decreased quality of life.^{3–6} The most common embolic event is stroke, which is associated with severe disability and dependence, involving significant increases in costs and in the use of health care systems.⁷ Identifying these patients is important because anticoagulation therapy is effective in preventing embolic events in patients at high risk. Study of the population prevalence of AF, using homogeneous criteria, provides valuable information for planning appropriate strategies for the prevention and treatment of this disease. In Spain, there is a lack of epidemiological data that would allow the prevalence rates of AF to be determined in the general population. In general, previous studies were conducted in groups of patients or in selected populations that were not representative of the Spanish general population, such as patients from specific areas not representative of the whole country, patients attending health centers or cardiology clinics, which introduced bias, or patients within narrow age ranges.^{8–11}

The aim of this population-based study was to estimate the prevalence of AF in the Spanish population older than 40 years by age (decades) and sex groups.

METHODS

Design and Definitions

A cross-sectional study was conducted in primary care (PC) among the general Spanish population older than 40 years assigned to a PC physician. One hospital from each Spanish province (2 in the case of Barcelona and Madrid) was invited to participate in the study, as well as a referral cardiologist from each hospital. In total, 46 provinces and 47 hospitals and cardiologists participated. Four provinces and the second hospital in Madrid were excluded or did not participate due to a variety of logistic problems. Based on this, a 2-stage random sampling procedure was used.

In each hospital, the number of PC physicians and their assigned population was determined and the participating physicians were selected using simple random sampling. Ten PC physicians were selected from each hospital. Each cardiologist was responsible for coordinating the work of these 10 physicians in his or her center. At this time, the participating hospitals had almost 8000 PC physicians assigned to them. A further 769 physicians were invited to participate, of whom 425 (55.2%) participated (Fig. 1).

For each participating PC physician, simple random sampling based on the national health card of the assigned population older than 40 years was performed, so that 20 patients were selected per physician. Selected individuals were invited to participate by the PC physician. At this stage, a 76% (n=8400) participation rate was achieved. All participants gave their informed consent to participate in the study. The study began in March 2010 and ended in October 2012.

Overall, 57 people were excluded due to the lack of key information (n=4) or because the electrocardiogram (ECG) could not be evaluated (n=53), and thus the final sample consisted of 8343 participants (Fig. 1).

All patients were examined by their PC physician, an ECG was performed on the day of the visit, and the patients were referred to the coordinating cardiologist for fast tracking according to the protocol (newly diagnosed or uncertain diagnosis). All ECGs were read centrally by at least 2 cardiologists (Fuenlabrada University Hospital) as described below. All the ECGs were initially evaluated by 1 cardiologist and subsequently by another cardiologist. If there was a discrepancy between the 2 diagnoses, a third cardiologist was consulted and a final diagnosis was reached by consensus between the second and third cardiologists. Of the total number of ECGs analyzed, a consensus was reached in 99.9% of the patients, of which 98.1% were classified as having AF (262 of 267) by 1 observer; thus, in 1.9% of the patients, there was disagreement between the 2 cardiologists who specifically analyzed the ECGs for the presence of AF. In total, the 15 patients who were not diagnosed during their examination by the PC physician were diagnosed when their ECGs were read centrally. These diagnoses were reported to the PC physicians in order for them to take any appropriate action.

Information on demographic variables, personal details, and general variables were collected, as well as clinical variables using a specific questionnaire for AF. The various clinical variables were defined according to the guidelines of the American College of Cardiology/American Heart Association for AF¹² as follows: obesity, body mass index greater than or equal to 30; overweight, body mass index greater than or equal to 25; central obesity, waist circumference greater than or equal to 102 cm for men and greater than or equal to 88 cm for women; hypercholesterolemia, previous diagnosis and treatment with lipid-lowering drugs; diabetes mellitus, previous diagnosis and treatment with oral diabetic agents or insulin; and previous diagnosis of documented ischemic heart disease, such as previous myocardial infarction, unstable angina or revascularization. Hypertension was defined as the presence of any of the following criteria: a) previous diagnosis of hypertension and treatment with medication, diet or exercise, and b) systolic blood pressure greater than or equal to 140 mmHg or diastolic blood pressure greater than or equal to 90 mmHg on at least 2 occasions on the day of examination.

A diagnosis of AF was based on 2 criteria: a) the presence of AF on ECG performed on the day of examination, and/or b) a documented clinical history of nonpermanent AF (paroxysmal or persistent).

Statistical Analysis

Given the nature of the sampling process, in which individuals in the population had different probabilities of being selected, each

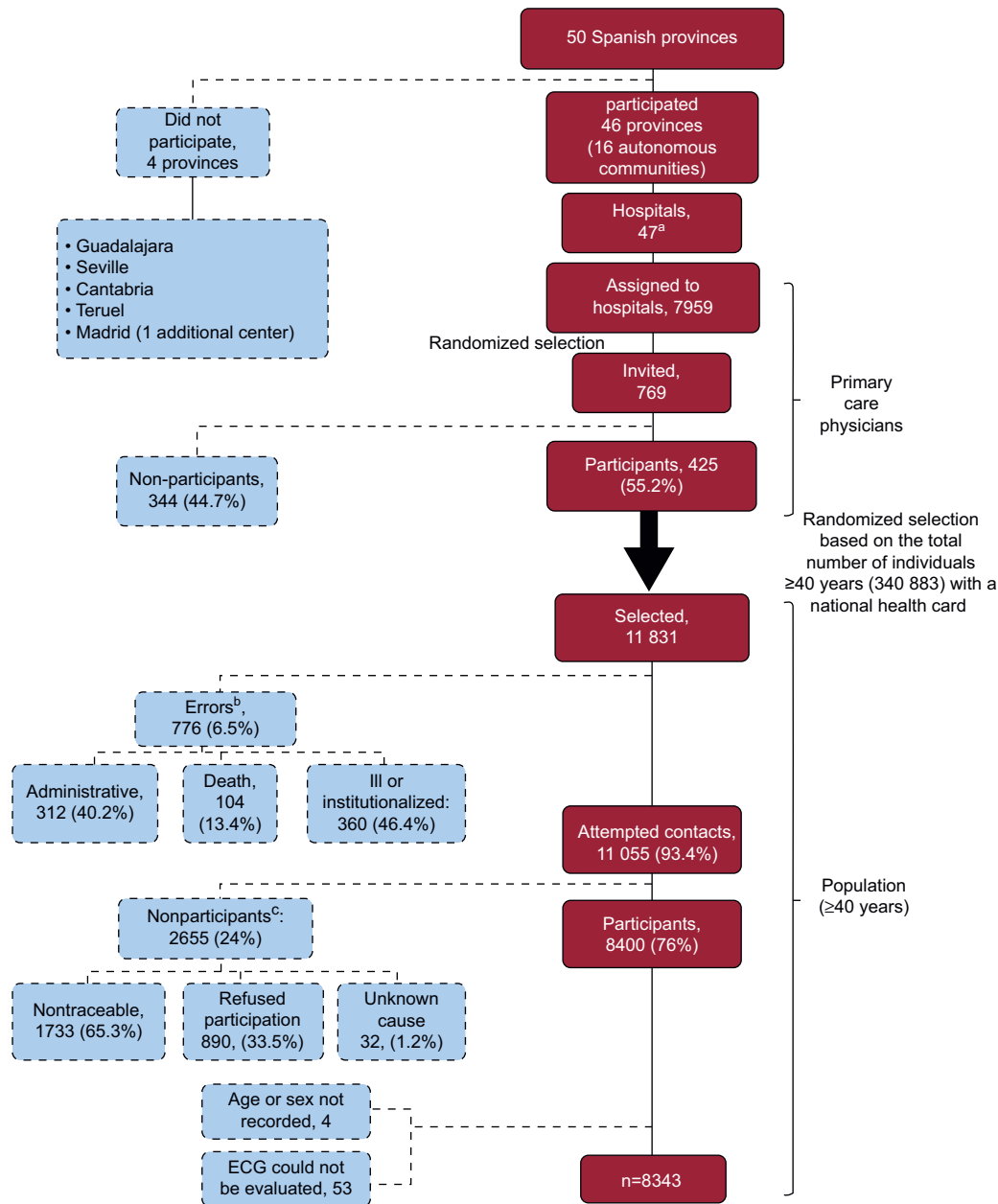


Figure 1. Flowchart of participation in the OFRECE study. ECG, electrocardiogram.

^aBarcelona: 2 hospitals participated. ^bErrors. Administrative: no longer a patient of the physician (does not belong to the center or the quota assigned), language difficulty; ill or institutionalized: institutionalized, acute or chronic disease preventing visits to the center, hospitalization, terminal process, bedridden, dementia, Alzheimer disease, mental disability, mental retardation or cognitive impairment. ^cReasons for not participating. Unreachable: after repeated attempts to contact by mail and/or telephone; participant refusal: refusal to participate or initial acceptance but failure to attend the center, various personal or business reasons preventing attendance at the center; unknown: unspecified cause.

participant in the final sample was assigned a weight representing the number of people in the Spanish population (with the exception of Ceuta, Melilla, and Cantabria, which did not provide participants), for the same age, sex, and geographical area as those represented by the patient.¹³ Thus, the sum of all the weights of the sample was equal to the size of the Spanish population older than 40 years.

Weighting was done in 2 stages. In the first stage of the 2-stage sampling design, the weights were calculated as the inverse of the probability of selecting each individual in each stage of the sampling process. In the first stage (physician selection), the probability of selection in each province was calculated by using the number of PC physicians in the province as the

denominator. In the second stage (participant selection), the number of people older than 40 years assigned to each physician was used as the denominator. In the second stage, a reweighting procedure was performed to adjust the sample distribution to the population distribution for variables related to the outcome of the analysis and not considered in the sampling procedure (age and sex). A third variable (geographical area) was included in case it was decided to present the data disaggregated by area. The data by autonomous community was not presented because the sample size calculated would provide inaccurate estimates. The reweighting procedure was performed using the method proposed by Deville and Särndal¹⁴ using the *calibrate* instruction in the Stata v10.1 statistical software package. The municipal population

Table 1
Characteristics of the Population With and Without Atrial Fibrillation

	All (n=8343)	With AF (n=410)	Without AF (n=7933)	P
Women, %	52.4	52.8	52.4	.890
Age group, %				
40-49 years	31.2	2.3	32.5	
50-59 years	24.6	5.7	25.4	
60-69 years	19.3	20.2	19.2	<.001
70-79 years	14.9	31.4	14.1	
≥80 years	10.1	40.4	8.7	
Cardiovascular risk factors				
Obesity, %	33.8	47.8	33.2	<.001
Overweight, %	42.1	36.9	42.3	.140
Central obesity, %	55.7	74.4	54.9	<.001
BMI, average	28.4	29.6	28.4	<.001
Waist circumference, average	96.6	101.4	96.4	<.001
Hypercholesterolemia, %	25.4	45.6	24.5	<.001
Diabetes mellitus, %	12.2	24.5	11.6	<.001
Smoking, %	22.3	4.7	23.2	<.001
Hypertension, %	45.3	76.0	43.9	<.001
SBP (mmHg), mean	130.9	134.8	130.7	.001
DBP (mmHg), mean	77.8	76.7	77.9	.226
Medical history				
Stroke, %	3.8	16.6	3.2	<.001
Peripheral artery disease, %	2.4	7.9	2.1	<.001
Chronic pulmonary disease, %	6.3	18.1	5.8	<.001
Thyroid disease, %	6.9	10.6	6.8	.009
Pacemaker implantation, %	0.7	7.4	0.4	<.001
ICD implantation, %	0.7	7.4	0.4	<.001
Ischemic heart disease, %	4.9	17.9	4.3	<.001
Previous diagnosis of HF, %	3.1	29.4	1.8	<.001

AF, atrial fibrillation; BMI, body mass index; DBP, diastolic blood pressure; HF, heart failure; ICD, implantable cardioverter-defibrillator; SBP, blood pressure.

census of 2011 was used to adjust or calibrate for sex, age, and geographic area. We considered 5 geographic areas defined by autonomous community grouping: north (Aragón, Principality of Asturias, Galicia, Chartered Community of Navarre, Basque Country, La Rioja); central (Castile and León, Castile-La Mancha, Community of Madrid); east (Catalonia, Valencian Community, Region of Murcia, Balearic Islands); south/south-West (Andalusia, Extremadura); and the Canary Islands.

All the analyses took into account the sampling design of the study. In the case of AF, specific prevalences were calculated by age and sex, as well as total prevalence and their 95% confidence intervals (95%CI).

Age- and sex-adjusted odds ratios were estimated using logistic regression models in order to identify cardiovascular risk factors and antecedents associated with the presence of AF. Subsequently, a multivariate model was adjusted for the variables with $P < .01$ in the bivariate analysis

RESULTS

The study included 8343 participants (mean age, 59.2 [95%CI, 58.6-59.8] years; 52.4% women). Table 1 shows the general characteristics of the study population and, for purposes of comparison, the same population disaggregated into those with a diagnosis of AF and those without AF. In the study population, AF was diagnosed in 410 patients (204 men and 206 women). Of these, 267 had a diagnosis of AF on ECG on the day of examination.

The remaining 143 patients had a documented history of AF but did not have AF on the day of examination (nonpermanent AF, 34.9% of all patients with AF).

The overall prevalence of AF was 4.4% (95%CI, 3.8-5.1). The prevalence was similar in men (4.4% [3.6-5.2]) and women (4.5% [3.6-5.3]), rising with increasing age older than 60 years. The prevalence of AF by age and sex is presented in Table 2 and Figure 2.

Regarding cardiovascular risk factors, patients with AF had a higher percentage of obesity (47.8% vs 33.2%; $P < .001$), hypercholesterolemia (45.6% vs 24.5%; $P < .001$), diabetes mellitus (24.5% vs 11.6%; $P < .01$), and hypertension (76% vs 43.9%; $P < .01$), and a lower percentage of smoking (4.7% vs 23.2%; $P < .001$) than patients without AF. Patients with AF more often had a history of cerebrovascular disease (16.6% vs 3.2%; $P < .001$), peripheral arterial disease (7.9% vs 2.1%; $P < .001$), pulmonary disease (18.1% vs 5.8%; $P < .001$), ischemic heart disease (17.9% vs 4.3%; $P < .001$) and a history of heart failure (29.4% vs 1.8%; $P < .001$) (Table 1).

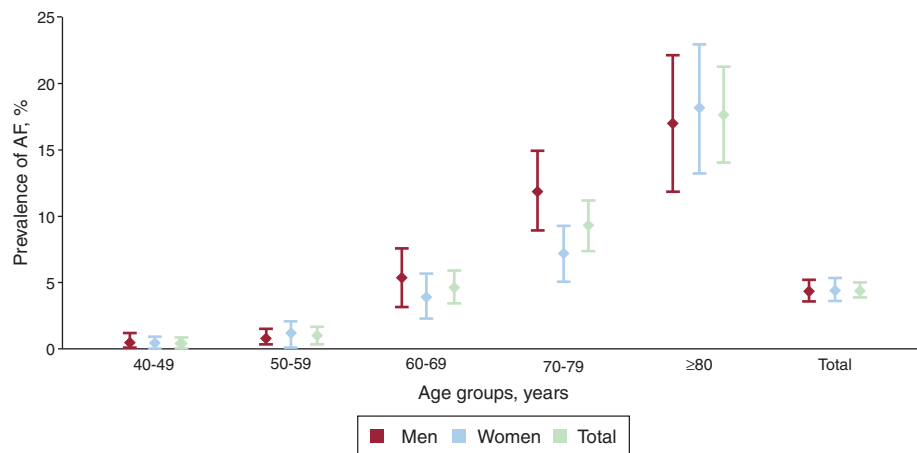
Multivariate analysis showed that age, male sex, central obesity, not smoking, a history of heart failure, thyroid disease, and having a pacemaker were independently associated with the presence of AF (Table 3). Although no differences were found in the prevalence of AF by sex, differences were found by decade, with a higher prevalence in men less than 80 years of age and in women more than 80 years of age. These data are in line with those of other studies, except for the finding of a higher prevalence in women in their eighties. Of the 410 patients with AF, 41 (10%) were diagnosed on the day of the examination (unknown AF).

Table 2

Prevalence of Atrial Fibrillation by Sex and Age Group and Estimated Number of Patients in the Spanish Population

Age	Men (n=3829)			Women (n=4514)			Total (n=8343)	
	%	95%CI	%	95%CI	%	95%CI		
40–49 years	0.5	0.0-1.2	0.2	0.0-0.4	0.3	0.0-0.7		
50–59 years	0.9	0.3-1.6	1.1	0.1-2.1	1.0	0.4-1.7		
60–69 years	5.3	3.1-7.5	4.0	2.3-5.7	4.6	3.4-5.9		
70–79 years	11.9	8.9-14.9	7.2	5.1-9.3	9.3	7.4-11.2		
≥80 years	17.0	11.9-22.1	18.1	13.3-22.9	17.7	14.1-21.3		
Total	4.4	3.6-5.2	4.5	3.6-5.3	4.4	3.8-5.1		
Age	Total (in thousands)	95%CI	Total (in thousands)	95%CI	Total (in thousands)	95%CI		
40–49 years	17.3	0.0-43.6	6.30	0.0-14.0	23.6	0.0-50.9		
50–59 years	26.7	9.26-44.2	31.6	0.49-62.6	58.3	21.4-95.2		
60–69 years	114.6	64.6-164.7	92.7	52.1-133.3	207.4	145.3-269.4		
70–79 years	183.0	131.8-234.1	138.9	97.5-180.3	321.8	252.9-390.9		
≥80 years	142.3	99.9-184.7	272.4	193.8-351.1	414.7	326.2-503.3		
Total	483.9	394.9-572.9	541.9	437.4-646.5	1025.8	879.1-1172.6		

95%CI, 95% confidence interval.

**Figure 2.** Prevalence of atrial fibrillation by sex and age group (95% confidence intervals). AF, atrial fibrillation.

Among patients with undiagnosed AF, there were higher percentages of patients without diabetes, smokers, and patients without a history of heart failure. Furthermore, this group had fewer symptoms as indicated by the fact that dizziness or palpitations were less often cited as the reason for their visit (Table 4).

The Spanish 2011 census estimated the population to be 46 815 916 inhabitants; of these, 51.1% (23 922 933 people) were older than 40 years of age. By applying the specific prevalences for age and sex observed in the OFRECE study to the Spanish population, and taking into account the design, the number of patients with AF in the population older than 40 years in Spain (with the exception of Cantabria, Ceuta, and Melilla) was estimated to be 1 025 846 (95%CI, 879 077-1 172 614), of whom 94 546 (95%CI, 57 944-131 148) would be undiagnosed.

DISCUSSION

This study is the first to provide estimates of the prevalence of AF in the Spanish population older than 40 years of age and shows that the prevalence of AF in this population increases with age. The strength of this study lies in the fact that it was conducted using the general population and that a highly representative sample

was obtained by the random selection of PC physicians and the population assigned to each physician, thereby strengthening the validity of the results. Previous studies have been based on the records of patients with other cardiovascular diseases (eg, hypertension) or on specific geographical areas, which has led to widely varying estimates, with prevalences between 0.7% and 8.5%.⁸⁻¹¹ The REGICOR study,⁹ the only study conducted in the general population rather than in patients from different areas, found a prevalence of 0.7%. However, that study was strongly limited by its exclusion of the population older than 74 years of age, precisely the age group with the highest prevalence of AF. In the PREV-ICTUS study,¹⁰ a population-based cross-sectional study that analyzed participants older than 60 years, the prevalence of AF was 8.5% (95%CI, 7.9%-9.2%), was higher in men (9.3% vs 7.9% in women), and increased from 4.2% in those aged between 60 and 64 years to 16.5% in those older than 85 years. The CARDIOTENS study,⁸ which was conducted in hypertensive patients, found a prevalence of AF of 4.8%, which increased with each decade of life (1.0% in those younger than 50 years and 11.1% in those older than 80 years). However, CARDIOTENS cannot be considered a population-based study because it included consecutive patients attending PC centers or cardiology services, which could have led to a selection bias that overestimated prevalence.

Table 3

Age- and Sex-adjusted Odds Ratios of Having Atrial Fibrillation for Each Cardiovascular Risk Factor, Previous History, and Final Multivariate Model

	OR (95%CI)	P
<i>Cardiovascular risk factors</i>		
Obesity	1.65 (1.22-2.23)	.001
Overweight	0.71 (0.51-0.98)	.038
Central obesity	1.78 (1.32-2.40)	<.001
Hypercholesterolemia	1.60 (1.17-2.19)	.004
Diabetes mellitus	1.42 (1.03-1.94)	.032
Smoking	0.44 (0.23-0.83)	.012
Hypertension	1.55 (1.05-2.29)	.029
<i>Previous history</i>		
Peripheral artery disease	1.81 (1.02-3.21)	.042
Chronic pulmonary disease	1.88 (1.21-2.92)	.005
Thyroid disease	1.90 (1.27-2.85)	.002
Pacemaker	9.31 (4.76-18.22)	<.001
Ischemic heart disease	2.59 (1.68-4.00)	<.001
Previous diagnosis of HF	8.73 (5.27-14.45)	<.001
<i>Multivariate model</i>		
Age	1.08 (1.06-1.10)	<.001
Female sex	0.61 (0.43-0.86)	.005
Central obesity	1.70 (1.24-2.33)	.001
Smoker	0.47 (0.24-0.92)	.028
Thyroid disease	1.69 (1.11-2.58)	.016
Pacemaker	5.50 (2.11-14.36)	.001
Previous diagnosis of HF	7.72 (4.44-13.41)	<.001

95%CI, 95% confidence interval; HF, heart failure; OR, odds ratio.

European studies have also reported wide variability in prevalences in the general population, with estimates ranging from 0.2% to 1.2% and, for people older than 50 years of age, from 1.5% to 5.5%.^{2,15–19} Most of the studies that have investigated the prevalence of AF are not strictly comparable for 2 reasons: a) the characteristics of the study population and their distribution by age and sex, and b) the method used to diagnose AF. Studies that based the diagnosis of AF on ECG alone, and not on a history of AF, found lower prevalences than those that based the diagnosis on ECG and a clinical history of AF.¹⁵ Another aspect that may influence the prevalence of AF in different series, as confirmed in this study, is the risk profile of the populations analyzed (prevalence of hypertension, diabetes mellitus, obesity, etc). In the case of the Spanish population, recent studies have demonstrated a high prevalence of variables associated with AF, which are not always well adjusted.^{20,21} In this study, all ECGs were read centrally by 2 cardiologists, which increased the quality of the information by enhancing diagnostic certainty and reducing variability and misclassification problems.

Interestingly, 10% of patients with AF at the time of examination were unaware of having AF. This figure is slightly different from that described by Labrador et al.¹¹ or Wheeldon et al.,¹⁶ who found that 8.6% and 7.7% or more of patients had undiagnosed AF, respectively. However, both these studies only analyzed the general population aged 65 years and older, and therefore the data are not directly comparable.^{11,16} It should be noted that there were higher percentages of men, patients without diabetes, smokers, and patients without a history of heart failure in the population of patients with previously undiagnosed AF (an arrhythmia that may cause few symptoms). This finding is very important because patients with AF have a 5-fold higher risk of a stroke²² and because effective treatment is available using classical or novel anticoagulants to prevent these embolic events.^{23,24}

Table 4

Characteristics of the Population With New Atrial Fibrillation and Previously Diagnosed Atrial Fibrillation

	New AF	Known AF	P
<i>Participants, no.</i>	41	369	
<i>Sex, %</i>			
Men	59.8	45.9	.208
Women	40.2	54.1	
<i>Age (years), mean</i>	74.7	75.3	.782
<i>CVRF, %</i>			
Obesity	40.0	48.6	.401
Overweight	51.1	35.4	.101
Central obesity	73.9	74.5	.942
Hypercholesterolemia	42.3	45.9	.708
Diabetes mellitus	9.8	26.0	.016
Smoking	17.9	3.3	.004
Hypertension	77.1	75.9	.907
<i>Medical history, %</i>			
Stroke	17.9	16.5	.851
Peripheral artery disease	7.4	8.0	.911
Chronic pulmonary disease	10.6	18.9	.227
Thyroid disease	7.1	11.0	.494
Pacemaker	4.8	7.7	.473
Ischemic heart disease	23.5	17.3	.397
Previous diagnosis of HF	7.4	31.6	.007
<i>Previous visit for dizziness/palpitations, %</i>			
Previous visit	25.3	55.7	.007
Visit to PC physician	25.3	41.8	.476
Visit to the cardiologist	7.8	43.0	.036
Visit to hospital emergency service	9.6	37.1	.284

AF, atrial fibrillation; CVRF, cardiovascular risk factors; HF, heart failure; PC, primary care.

Limitations

The hospitals studied within each province were not randomly selected. This probably had very little impact on the study as it is unlikely that the prevalence of AF varies significantly between adjacent areas. Of more importance, the randomized selection of the physicians and particularly of the patients assigned to each physician was considered to add strength to the results of this study. The high number of sampling points improved the representativeness of the sample, which is sometimes difficult to evaluate. A limitation inherent to this type of general population study is that the participants may differ from nonparticipants. Although it is impossible to completely rule out potential bias due to selective participation and to determine its direction, it should be emphasized that any such bias cannot be very large, since there was a very good participation rate for this type of study (76% of those invited to participate in the study) and, of the nonparticipants, only one-third did not participate due to refusal. Another limitation is that the patients without a known history of paroxysmal AF and with a normal ECG at the time of examination by the family physician were not diagnosed with AF; however, this limitation is common to all published studies on the prevalence of AF and is difficult to avoid. Furthermore, when AF was diagnosed on the basis of clinical history alone, a centralized reading of the previous ECG was obviously not possible; nevertheless, a diagnosis of AF was only included in the study if such a reading was recorded in a medical record or the clinical history in PC.

CONCLUSIONS

The prevalence of AF in the general Spanish population older than 40 years is high (4.4%). The overall prevalence is similar in men and women, but differs according to the decade of age analyzed and increases steeply above 60 years of age. There are over 1 million patients with AF in the Spanish population, of whom more than 90 000 are undiagnosed. This has important implications for public health due to the frequency and severity of complications caused by this arrhythmia in the absence of treatment.

ACKNOWLEDGEMENTS

The authors acknowledge the assistance of the Steering Committee, coordinators, researchers and collaborators listed in the [Appendix](#), and the following institutions which contributed to the development of the study: *Consejería de Salud de la Junta de Andalucía; Servicio Aragonés de Salud, Gobierno de Aragón; Consejería de Sanidad del Principado de Asturias; Servicio de Salud de Castilla-La Mancha; Consejería de Sanidad de la Junta de Castilla y León; Conselleria de Salut de la Generalitat de Catalunya; Conselleria de Sanitat de la Generalitat Valenciana; Consejería de Sanidad, Gobierno de Extremadura; Conselleria de Sanidade de la Xunta de Galicia; Conselleria de Salut i Consum, Govern de les Illes Balears; Consejería de Sanidad, Gobierno de Canarias; Consejería de Sanidad,*

Gobierno de la Rioja; Consejería de Sanidad de la Comunidad de Madrid; Consejería de Sanidad y Política Social, Región de Murcia; Consejería de Sanidad, Gobierno de Navarra, and Consejería de Sanidad del Gobierno Vasco. We also thank ODDS S.L. as the coordinating center and for data analysis. We also extend special thanks to Soly Santiago Perez, for data analysis, Teresa Rosalía Perez Castro, for managing the database, training the participating physicians, and coordinating work field, and M. Luisa López Domínguez, for her administrative work and call-center coordination.

FUNDING

The OFRECE study was supported by the Research Agency of the Spanish Society of Cardiology (*Agencia de Investigación de la Sociedad Española de Cardiología*). This study was made possible by financial support from SANOFI, which was not involved in the study design, data analysis, or preparation of the final manuscript, and partly (pilot study) by the *Observatorio de Salud de la Mujer, the Observatorio del Sistema Nacional de Salud, the Agencia de Calidad del Sistema Nacional de Salud, and the Ministerio de Salud y Consumo.*

CONFLICTS OF INTEREST

None declared.

APPENDIX. STEERING COMMITTEE, COORDINATORS, RESEARCHERS, COLLABORATORS, AND READING CENTER

Steering Committee			
Executive Committee	Juan José Gómez-Doblas, Servicio de Cardiología, Hospital Clínico Universitario Virgen de la Victoria, Málaga; Javier Muñoz, Instituto de Ciencias de la Salud, Universidad de A Coruña, A Coruña; Joaquín J. Alonso Martín, Servicio de Cardiología, Hospital Universitario de Fuenlabrada, Fuenlabrada, Madrid; Eulalia Roig, Servicio de Cardiología, Hospital de Sant Pau, Barcelona		
Scientific Committee	Gustavo Rodríguez-Roca, Centro de Salud La Puebla de Montalbán, Toledo; José María Lobos, Centro de Salud Villablanca, Madrid; Gaietà Permanyer, Servicio de Cardiología, Hospital Universitari Vall d'Hebron, Barcelona; Manuel Anguita, Servicio de Cardiología, Hospital Reina Sofía, Córdoba		
Coordinators, researchers and collaborators			
Autonomous community	Province	Coordinator	Primary care researchers and collaborators
Andalusia	Almería	Jacinto Benítez Gil	Francisco Garzón Montero; Virginia Bueno del Campo; Carmen Montabes Pereira; Santiago López Fábrega; Francisco Javier Almecija Flores; Eduardo C. Mecáñez García. Collaborators: Jesús Enrique Montoro Robles, Manuela González López
	Cádiz	Manuel Ruiz Ruiz	Juan Carlos Molina Deudero; Inmaculada País Mateos; Javier Rodríguez Conejo; Dolores Montero Fuentes-Guerra; Myrian Olivares Morales; Raquel de Lara Muñoz; Milagros Pérez López; Francisco Umbría Campoo; José María Tenorio Sánchez
	Córdoba	Manuel Anguita Sánchez	Emilio García Criado; Jorge Martínez de la Iglesia; Juana Redondo Sánchez; Enrique Martín Rioboo; Juana María González Barranco; Francisco Javier Ruiz Moruno; María Auxiliadora Cabanás Espejo; Trinidad Lechuga Varona; Cristina Aguado Taberne; Juan José García Gallego. Collaborators: Antonia Calero Espino
	Granada	Pablo Toledo Frías	Nieves Hitos Henares; Rosario López Bueno; Adoración Caba Martín; Concepción Molina Serrano; Concepción Macía Canon; Pedro Tejada Paredes; Antonieta Maldonado Larroque. Collaborators: Amparo Arrabal Martín, Agustina Matilla Marcos
	Huelva	Carlos Sánchez González	Antonio Ortega Carpio; M. Eloisa Arias Fortes; Javier Ferraro García; Migliane Lima Costa; Isabel Ruiz Cumplido; Pilar Freire Pérez
Jaén	Eduardo Vázquez Ruiz de Castroviejo	Ramiro Aguilera Tejero; Fermina Bruque Sánchez; Pablo Tallón Povedano; Lorenzo Escabias Andreu; Víctor Figueroa Cardona; Alejandro Pérez Milena; José Moraleda Martínez; M. Dolores Rodríguez Serrano	

APPENDIX. STEERING COMMITTEE, COORDINATORS, RESEARCHERS, COLLABORATORS, AND READING CENTER (Continued)

Autonomous community	Province	Coordinator	Primary care researchers and collaborators
	Málaga	Juan Robledo Carmona	Amparo Aragón Ramírez; Carlos Gutiérrez Maturana Camañes; Concepción Cañero Criado; Cristina Delgado Utrera; Dolores Muñoz Galán; Ignacio Boto Gutiérrez; Juan Luis Villamor Bueno; Vicente Villatoro Jiménez; Victoria Alcaraz Martínez. Collaborators: Belén Pajariño Gallego, Jacinta Meléndez Ortigosa, Vicente Raimundo Arrabal Pérez, Alberto Márquez López, María del Pilar Aguilar Trujillo
	Seville		Antonio Casco Gallardo
Aragón	Huesca	Javier Escota Villanueva; Mariano Rodríguez Torrente	Eva Aguaron Joven; José María Borrel Martínez; Juan Manuel Culebras Marco; Dolores Idoñez Rodríguez; Teófilo Lorente Aznar; Ana Rivera Fuertes; Carmen Quintana Velasco; Carlos Aisa Arenaz; José María Barrio Navascues; José María Castillo Olivera. Collaborators: Inmaculada Lera Omiste, Gemma Ciria
	Zaragoza	Ricardo Gayán	Ana Avelino Terrón; M. Luisa Aznar Arribas; Pedro J. Marín Velázquez; Adolfo Benito Jiménez; Rafael Vargas Arévalo; José Fernando Pina; Jesús Fco. Romeo Ladrero; M. Asunción Alfaro Lozano; José Javier Calvo García; Jesús María Lasso Moreno
Principality of Asturias	Asturias	Inés Möller Bustinza	M. Teresa Saldaña Hernández; Manuel Berrocal Varela; Amador Jenaro Carbajal Cocina; Francisco Javier Claros González; Natalia Juesas Fernández; Joaquín Prieto Gutiérrez; Agustín Sánchez Hernández; Purificación Seijo González; Ana Picasso Martínez de Ubago
Castile-La Mancha	Albacete	Moisés Barambio Ruiz	Antonio Cifuentes Verdú; Concepción Escolano Vizcaíno; Francisco Javier Ayllón Ayllón; Francisco Lorenzo Salido; Cándido Martínez García; María Concepción Casado Moragón; Antonio Martínez Lozano; Lucinio Carrión Valero; José Miguel Ocaña López; Mirian Martínez Carretero
	Ciudad Real	Luis Ruiz-Valdepeñas Herrero	Raquel Bañón García; M. Teresa Alcaide Cornejo; Cristina Herráiz Serrano; Antonio Guindas Ruiz; Andrés Herrera Canales; Antonio-Lorenzo Ruiz Serrano; Francisco de Asís Aseño Hernández; Angel Fermín Pérez Sánchez; Alfonso Ruiz-Póveda García-Rojo; M. Isabel Ariza Sánchez
	Cuenca	Antonio Melero Pita	Isidro Sanz Polo; Rafael Morilla Ramilo; Joaquín Román López Villar; Fernando Madero López; Alfredo Cabrejas Sánchez; Rosa M. Cejudo Serrano; Jesús Buendía Bermejo; Sagrario Saiz Santos; Adoración Romero Saiz; Julia Martín Lezana
	Toledo	Luis Rodríguez Padial	Raquel Parejo Míguez; José Ignacio Jaén Díaz; Angel Alonso Alía; Alberto Sepúlveda Martín; María Vega Martínez Escudero; Miguel Laborda Peralta; José María Jiménez Rodríguez; M. Angeles Adán Valero; Francisco Javier Alonso Moreno; Carmen Ramos López. Primary care collaborators: Irene Martínez Giner, Jesús Adrián Sifuentes Hernández, María Dolores Martínez Malabia, Victoria Madiedo Acosta
Castile and León	Ávila	Igor Molina Puente	Miguel Angel Fernández Gutiérrez; Carlos de Cabo González; Lidia Sastre Jiménez; F. Javier Ríos Almarza; Blanca Noreña Delgado; Cesarina Rivas Hernández; Carlos Javier García Gómez; Juan Luis Martín Clavo; Alfonso Carlos Caro Picón; Benigno Sánchez Martín
	Burgos	Germán Pérez Ojeda	Angel María Olea Movilla; Pedro Luis Estables Recansens; Lucinio Anaya Bernabe; Carmen Caballero Abad; Jesús García Cuadrillero; M. Felisa Lara Caballero; Benito Sanz Mozo; Felipe Eulalio Martín Rosón; M. Cruz González González
	Leon	Norberto Alonso Orcajo; Raúl Carbonell de Blas; Cristina Pascual Vicente; Agustín Romero Blanco	Leonor Martín Santín; M. Isabel Fernández Marassa; Mercedes García de Celis; Elena Fernández Mielgo; Faustino Sánchez Sanmartino; Margarita Gallego de la Varga; Angel Novoa Mato; Ana Isabel Barragán Marín; Jesús Marino Villamar Berceruelo
	Palencia	Chema Asín Guillén	Juan Antonio Losmozos Sánchez; José Luis Durand Eguiluz; María Carmen Monge González; Enrique de Inés Martín; José Manuel Zumel Elices; Juan Manuel Durantez Cacharro; Tomás Manzano Benito; Isaac Alcalde García; M. Eugenia Barón Laguna
	Salamanca	Javier Jiménez Candil	Javier García Izquierdo; Julio Guerrero del Olmo; Luis García Ortiz; Carlos Hernán-Pérez Leal; José Calama Becerro; Carmen de Antonio Jiménez; Manuel Becerro Cereceda
	Segovia	Carlos Junquera Planas	Emilio García Ortega; Rosa María Fernández Santa Teresa; M. Concepción Manrique de la Fuente; Juan Francisco Gil García; Martín Merino Segovia; Fernando Mondejar Quirós; Javier González Perlado; Ana Isabel Herrero Cecilia; José de Pablo Álamo

APPENDIX. STEERING COMMITTEE, COORDINATORS, RESEARCHERS, COLLABORATORS, AND READING CENTER (Continued)

<i>Autonomous community</i>	<i>Province</i>	<i>Coordinator</i>	<i>Primary care researchers and collaborators</i>
	Soria	Valentin del Villar Sordo	M. Jesús de Pablo Ramos; Ana M. Cabrerizo Puente; M. Antonia Hernández Caballero; Antonio Alberto Gil Gómez; Francisco Javier Martínez Sanz; Luis Gutiérrez Moreno; Elena de Pablo Ramos; Ramón García Martínez; Angel Lafuente Esteban; Gema Borque Molinos
	Valladolid	María Jesús Rollán Gómez	Rocio Velasco Pastor; M. Jesús Aller de la Fuente; Mercedes Redondo Valdeolmillos; Jesús María Aguilar García; Verónica Casado Vicente; Elpidio García Ramón; Luis Angel Herrán Oteruelo; Jesús Francisco García Rodríguez; Enrique Sanz Monedero; Ruperto Sanz Cantalapie Collaborator: Miguel Angel Morales Torres
	Zamora	José Antonio Ortiz de Murua López	Angela Nistal Ramos; Francisco Javier Delgado Rodríguez; Luis Garrote Gutiérrez; Antonia Refoyo Enríquez; M. Dolores Rodríguez Martín; Pedro Martín Martín; Clodoaldo Pérez Ramos; Mercedes Prieto Mantellán; Gabriel González Panero; Alberto Jiménez Meléndez
Catalonia	Barcelona	Amparo Álvarez Auñón; Vicens Brossa Loidi	Sandra Sabarich Flores; Judit Novo Salvador; Montserrat Llordés Llordés; María Eugenia Pérez Domínguez; Telma Cristina Vicentín; Francisco Javier Martínez Quílez; Francisco Javier Avilés Fernández; Laura Díaz Gete; Alicia Mostazo Muntané; Amelia Espinosa Santana; Antonia Llauger Roselló; M. Dolors Moriano García; Jordi Nadal Echevarria; M. Angels Salvador Millán; Herminio Moliner Lizondo. Collaborator: Monserrat Roca Vilalta
	Girona	Joan Sala Montero	Josep Gil Yubero; Ferrán Cordón Granados; Montse Lloveras Clos; Emili Marco Segarra; Ramón Creus Bosch; Carmen López Sanmartín; Dídac Parramón i Font; Begoña Santana de Carlos; Cristina Servent Batlle. Collaborators: Judith Pinsach Garanger, Laura Vegas Fernández
	Lleida	Fernando Worner Diz	Jorge Soler González; Marta Ortega Bravo; Antonio Rodríguez Rosich; Plácido Santafe Soler; Eduard Peñascol Pujol; José Masamunt Jove; José Luis Morera Serra; Olga Pérez Queiruga; Antoni V. Plana Blanco
	Tarragona	Jordi Mercé Klein	Merce Peri Viñes; Elisabeth Salsench Serrano; Eva María Oya Girona; Francisco Martín Luján; Rosa María Lara Ibáñez; Rafael Albiol Lluís; Ferrán Grifoll Ruiz; Irene Pascual Palacios; Dolores Gazol Soler
Valencian Community	Alicante	Alberto Cordero Fort	Manuel Carlos Salas Tomás; Rosario García Santafe; Nieves Gómez Moreno; Salvador Pertusa Martínez; Soledad García Bevia; Luis Richard Rodríguez; Alberto Asencio Aznar. Collaborator: María Adsuar Adán
	Castellón	Lorenzo Fácila Rubio	José Vicente Herrero Ballestar; Beatriz Sánchez-Peral Sánchez; Amparo Antón Aguilera; M. José Manrique Costa; Manuel Batalla Sales; María Isabel Martí Giner; María Teresa Aguilar Arnau; M. Angeles Goterris Pinto; M. Dolores Aicart Fort; M. José Monedero
	Valencia	Francisco Ridocci Soriano	Fernando Quiles Añón; Juan Carlos Beguer Miquel; Asunción Girbes Revert; M. Angels Pages Juanola; María Teresa Villalba Calatayud; Amparo Castro Lorente
Extremadura	Badajoz	Antonio Merchán Herrera	Macarena Candela Maestú; Juan José Dorado Martín; Antonio García Concellón; María S. Gil Llinás; Calixta Mantilla Calderón; Manuel Martínez de la Concha; Beatriz Pardo Díaz de Entresotos; Rosario T. Trinidad Ramos; José A. Morales Ruiz
	Cáceres	José Javier Gómez Barrado	Fernando Pérez Escanilla; Carlos Arjona Mateos; Dimas Igual Fraile; Amparo Gómez Espárrago; M. Socorro Gacto Fernández; José Polo García; Sebastián Traba Hernández; Sabina Rodríguez Borreguero; Alfonso Barquilla García
Galicia	A Coruña	José Angel Rodríguez Fernández	David Bouza Álvarez; Luis Buendía Fernández; Francisco Javier Maestro Saavedra; Manuel Barral Castro; Juan Manuel Peteiro Martínez; José Luis Díaz Santiago; Concepción Blanco Sánchez; Cristina Iglesias Díaz
	Lugo	Ana Testa Fernández	Germán Fernández López; José Enrique Cajiao Bonome; José Manuel Menéndez Tamargo; Cristina Arijón Barazal; Vicente Quirós Madariaga; Domingo D. García Rivas; Domingo Fernández Méndez; M. Teresa García Novo; Bernardino Pardo Teijeiro
	Ourense	Manuel García García	Rosario Calle Custodio; Alberto J. del Alamo Alonso; Pedro Blanco Iglesias; Antonio Pedreira Penedo; M. Dolores Antolín Novoa; Ana Veiga Vázquez; Agapito Diéguez Estévez; Jorge Lloveres Insua; Aida Robles Castiñeiras

APPENDIX. STEERING COMMITTEE, COORDINATORS, RESEARCHERS, COLLABORATORS, AND READING CENTER (Continued)

<i>Autonomous community</i>	<i>Province</i>	<i>Coordinator</i>	<i>Primary care researchers and collaborators</i>
	Pontevedra	Francisco Calvo Iglesias	Evangelina Filloy Míguez; José Carlos Sendín Sánchez; Xesús Fernández Núñez; Juan José Crespo Sabaris; José Rubio Panadeiros; M. Luisa Blázquez Ballesteros; Manuel Domínguez Sardiña; M. Begoña Porritt Lueiro; Manuel M. Lorenzo San Martín; Francisco López Sobrino
Balearic Islands	Mallorca	David Crémer Luengos	Natalia Feuerbach Ahtel; Montserrat de la Torre Vidal; Alejandro Pizá Colom; Adriano Juan Mayrata Vicens; Cristina Gadea Ruiz; Catalina Picornell Yanes; Montserrat Sauleda Pares; Carmen López Moreno; Francisca Bestard Reus; Silvia Martín Delgado
Canary Islands	Las Palmas	M. Antonia Viña Liste	Pedro J. Díaz Alayón; Luis Antonio Escalada Muñoz; Juan Pedro Jiménez Sarmiento; Beatriz Pérez López; Domingo Guerra Vega; Emilio Sánchez Carrión; Javier Santana Quilez; Gloria Calero González; Tomás González Rodríguez; Carmen Berrio Santana
	Sta. Cruz de Tenerife	Horacio Pérez Hernández	Nicolás Maffiotte Carrillo; Juan Francisco Tejera Cabrera; Alfredo Bartolomé Andrés; Emma Navarro Brito; Francisco José Castro Álvarez
La Rioja	La Rioja	Adrián Beloscar Llorca; Alfonso Jiménez Galán	José Tomás Gómez Saenz; Juan Manuel Marrodan Adan; Julio Peña Angos; Alejandro Paradiñeiro Somoza; Jesús M. Gutiérrez de Bobadilla; José María Martínez Martínez; Ignacio Fernández Hurtado; Mikel Ugalde Olano; Juan José García Díaz; Oscar León Fernández
Community of Madrid	Madrid	José María Serrano Antolín	Antonio Sánchez Serrano; Belén Muñoz Gómez; M. José García Sacristán; Rocío Balas Urea; M. José Rojas Giraldo; Mar Noguerol Álvarez; Carlos Díaz Gómez-Calcerrada; Ignacio Arjona Anchoriz; Rocío Vello Cuadrado
Region of Murcia	Murcia	Manuel Villegas García	María Xania de Casas Fernández; Rafael Luquín Martínez; Antonio Javier Llorens Minguell; M. del Carmen Paniagua Merchán; Concepción Carvajal Lucerga; Montserrat Martínez Sánchez; M. Isabel Caceres López; M. José Miras Martínez; Manuel Haenelt Maguel; Ana Celia Melgar García
Chartered Community of Navarre	Navarre	Marisol Alcasena Juango	Vicente Estremera Urabayen; Juan Manuel Pérez Gómez; Ramón Villanueva Moreno; M. Teresa Salinas Videndo; M. del Mar Hernández Espinosa; Carlos Figuero Echeverría; José Manuel Calleja Pascual; Arturo Erlanz Abad; Jesús Javier Jurio Burgui
Basque Country	Álava	Maruja Bello Mora	Jon Azkarate Zubiaur; M. Asunción Aldecoa Eguillor; Juan Francisco Pérez de San Román Setien; Laura Ortiz de Lazcano Herrera; Lucía Pereda López; María Angeles Calvo Gainzarain; Olga Ruiz de Arbulo Ruiz de Alegría; Juan Carlos Martín Fernández Landa; Luis Laborda González; Francisco Javier Blanco Cuadra
	Guipúzcoa	Esther Recalde	José Ramón Chopitea Gabiola; Aintzane Abasolo García; Miguel Mier Cascallana
	Vizcaya	Nekane Murga Eizagaetxebarria	Ana Isabel Izaguirre Berasategui; Juan Bautista Loizaga Horno; Cristina Lekube Angulo; José Angel Del Pozo Yruegas; Alazne Ramoneda Errazquin; Igone Asua Angulo; Epifanio Álvarez Grande; María Natividad de Soto Gorroño; Rosario Angulo Rivero
Electrocardiogram reading center			
<i>Center</i>	<i>Coordinator</i>	<i>Other members of the group</i>	
Hospital Universitario de Fuenlabrada (Madrid)	Paula Awamleh García	Alejandro Curcio Ruigómez; Carmen Cristobal Valera; Adolfo Fontenla Cerezuela; Catherine Graupner Abad; Rosa María Jiménez Hernández; María Luaces Méndez; José María Serrano Antolín; Pedro Talavera Sánchez; Rodrigo Teijeiro Mestre	

REFERENCES

- Go AS, Hylek EM, Phillips KA, Chang Y, Henault LE, Selby JV, et al. Prevalence of diagnosed atrial fibrillation in adults: national implications or rhythm management and stroke prevention: the AnTicoagulation and Risk Factors in Atrial Fibrillation (ATRIA) Study. *JAMA*. 2001;285:2370–5.
- Majeed A, Moser K, Carroll K. Trends in the prevalence and management of atrial fibrillation in general practice in England and Wales, 1994–1998: analysis of data from the general practice research database. *Heart*. 2001;86:284–8.
- Kannel WB, Wolf PA, Benjamin EJ, Levy D. Prevalence, incidence, prognosis, and predisposing conditions for atrial fibrillation: population-based estimates. *Am J Cardiol*. 1998;82:N2–9.
- Kannel WB, Abbott RD, Savage DD, McNamara PM. Epidemiologic features of chronic atrial fibrillation: the Framingham study. *N Engl J Med*. 1982;306:1018–22.
- Miyasaka Y, Barnes ME, Petersen RC, Cha SS, Bailey KR, Gersh BJ, et al. Risk of dementia in stroke-free patients diagnosed with atrial fibrillation: data from a community-based cohort. *Eur Heart J*. 2007;28:1962–7.
- Dorian P, Jung W, Newman D, Paquette M, Wood K, Ayers GM, et al. The impairment of health-related quality of life in patients with intermittent atrial fibrillation: implications for the assessment of investigational therapy. *J Am Coll Cardiol*. 2000;36:1303–9.
- Wolowacz SE, Samuel M, Brennan VK, Jasso-Mosqueda JG, Van Gelder IC. The cost of illness of atrial fibrillation: a systematic review of the recent literature. *Europace*. 2011;13:1375–85.

8. García-Acuña JM, González-Juanatey JR, Alegría Ezquerro E, González Maqueda I, Listerri JL. La fibrilación auricular permanente en las enfermedades cardiovasculares en España. Estudio CARDIOTENS 1999. *Rev Esp Cardiol*. 2002;55:943–52.
9. Masia R, Sala J, Marrugat J, Pena A. Investigadores del Estudio REGICOR. Prevalencia de fibrilación auricular en la provincia de Girona: el Estudio REGICOR. *Rev Esp Cardiol*. 2001;54:1240.
10. Cea-Calvo L, Redón J, Lozano JV, Fernández-Pérez C, Martí-Canales A, Listerri JC, et al. Prevalencia de fibrilación auricular en la población española de 60 o más años de edad. Estudio PREV-ICTUS *Rev Esp Cardiol*. 2007;60:616–24.
11. Labrador García MS, Merino Segovia R, Jiménez Domínguez C, García Salvador Y, Segura Frago A, Hernández Lanchas C. Prevalencia de fibrilación auricular en pacientes > 65 años de un área de salud. *Aten Primaria*. 2001;28:648–51.
12. McNamara RL, Brass LM, Drozda Jr JP, Go AS, Halperin JL, Kerr CR, et al. American College of Cardiology; American Heart Association. ACC/AHA key data elements and definitions for measuring the clinical management and outcomes of patients with atrial fibrillation: A report of the American College of Cardiology/American Heart Association Task Force on Clinical Data Standards (Writing Committee to Develop Data Standards on Atrial Fibrillation). *J Am Coll Cardiol*. 2004;44:475–95.
13. Silva LC. Diseño razonado de muestras y captación de datos para la investigación sanitaria. Madrid: Díaz de Santos; 2000.
14. Deville JC, Särndal CE. Calibration estimators in survey sampling. *J Am Statist Assoc*. 1992;87:376–82.
15. Schmutz M, Beer-Borst S, Meiltz A, Urban P, Gaspoz JM, Costanza MC, et al. Low prevalence of atrial fibrillation in asymptomatic adults in Geneva, Switzerland. *Europace*. 2010;12:475–81.
16. Wheeldon NM, Tayler DI, Anagnostou E, Cook D, Wales C, Oakley GDG. Screening for atrial fibrillation in primary care. *Heart*. 1998;79:50–5.
17. Heeringa J, Van der Kuip DA, Hofman A, Kors JA, Van Herpen G, Stricker BH, et al. Prevalence, incidence and lifetime risk of atrial fibrillation: the Rotterdam study. *Eur Heart J*. 2006;27:949–53.
18. Hobbs FDR, Fitzmaurice DA, Jowett S, Mant S, Murray E, Bryan S, et al. A randomized controlled trial and cost-effectiveness study of systematic screening (targeted and total population screening) versus routine practice for the detection of atrial fibrillation in people aged 65 and over. The SAFE study *Health Technol Assess*. 2005;9:1–74.
19. Ölundarson PT, Thorgeirsson G, Jonmundsson E, Sigfusson N, Hardarson T. Chronic atrial fibrillation—epidemiologic features and 14 year follow-up: a case control study. *Eur Heart J*. 1987;8:521–7.
20. Barrios V, Calderón A, Escobar C, De la Figuera M. Grupo de Atención Primaria de la Sección de Cardiología Clínica de la Sociedad Española de Cardiología. Pacientes con fibrilación auricular en Atención Primaria. *Estudio Val-FAAP*. *Rev Esp Cardiol*. 2012;65:47–53.
21. Banegas JR, López-García E, Dallongeville J, Guallar E, Halcox JP, Borghi C, et al. Achievement of treatment goals for primary prevention of cardiovascular disease in clinical practice across Europe: the EURIKA study. *Eur Heart J*. 2011;32:2143–52.
22. Reynolds MW, Fährbach K, Hauch O, Wygant G, Estok R, Cella C, et al. Warfarin anticoagulation and outcomes in patients with atrial fibrillation: a systematic review and metaanalysis. *Chest*. 2004;126:1938–45.
23. Atrial Fibrillation Investigators. Risk factors for stroke and efficacy of antithrombotic therapy in atrial fibrillation. Analysis of pooled data from five randomised controlled trials. *Arch Intern Med*. 1994;154:1449–57.
24. Furie KL, Goldstein LB, Albers GW, Khatri P, Neyens R, Turakhia MP, et al. Oral antithrombotic agents for the prevention of stroke in non valvular atrial fibrillation: a science advisory for healthcare professionals from the American Heart Association/American Stroke Association. *Stroke*. 2012;43:3442–53.