

Image in cardiology

## Left Ventricular Pseudo-pseudoaneurysm



### Seudoseudoaneurisma ventricular izquierdo

Alberto García-Lledó,<sup>a,\*</sup> José Luis Moya Mur,<sup>b</sup> and Javier García Segovia<sup>a</sup>

<sup>a</sup>Servicio de Cardiología, Hospital Universitario Príncipe de Asturias, Alcalá de Henares, Madrid, Spain

<sup>b</sup>Servicio de Cardiología, Hospital Universitario Ramón y Cajal, Madrid, Spain



Figure 1.

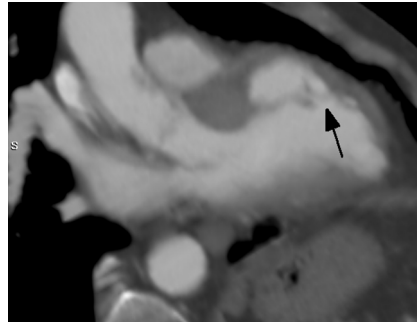


Figure 2.



Figure 3.

Left ventricular pseudo-pseudoaneurysm is a rare type of subepicardial aneurysm. It consists of an intramyocardial dissecting hematoma communicating with the ventricular cavity through a thin neck. Very few cases have been reported, most of them after a myocardial infarction.

The figures show 3 multislice computed tomography scan views of a septal pseudo-pseudoaneurysm. It appears as an intramyocardial dissecting chamber with the subepicardial myocardium clearly visible. An arrow marks the neck. [Figure 1](#) shows a horizontal section and [Figures 2 and 3](#) show long and short axis views, respectively, of the left ventricle, generated by multiplanar reconstruction. Images were obtained from a 72-year-old male patient who experienced an anteroseptal myocardial infarction 16 years ago. The patient was asymptomatic. The pseudo-pseudoaneurysm was previously known and has not changed in size during the last 7 years.

\* Corresponding author:

E-mail address: [alberto.garcia-lledo@uah.es](mailto:alberto.garcia-lledo@uah.es) (A. García-Lledó).

Available online 27 June 2014