

Original article

Iron Status in Chronic Heart Failure: Impact on Symptoms, Functional Class and Submaximal Exercise Capacity



Cristina Enjuanes,^{a,b,c,*} Jordi Bruguera,^{a,b} María Grau,^d Mercé Cladellas,^{b,c} Gina Gonzalez,^a Oona Meroño,^b Pedro Moliner-Borja,^{a,b} José M. Verdú,^{b,e} Nuria Farré,^{a,b} and Josep Comín-Colet^{a,b,c}

^a Programa de Insuficiencia Cardíaca, Servicio de Cardiología, Hospital del Mar, Barcelona, Spain

^b Grupo de Investigación Biomédica en Enfermedades del Corazón, IMIM (Instituto Hospital del Mar de Investigaciones Médicas), Barcelona, Spain

^c Departamento de Medicina, Universidad Autónoma de Barcelona, Barcelona, Spain

^d Grupo de Epidemiología y Genética Cardiovascular, IMIM (Instituto Hospital del Mar de Investigaciones Médicas), Barcelona, Spain

^e Instituto de Investigación en Atención Primaria Jordi Gol, Instituto Catalán de la Salud, Barcelona, Spain

Article history:

Received 3 March 2015

Accepted 14 August 2015

Available online 10 December 2015

Keywords:

Iron deficiency

Heart failure

Soluble transferrin receptor

Submaximal exercise capacity

6-minute walk test

ABSTRACT

Introduction and objectives: To evaluate the effect of iron deficiency and anemia on submaximal exercise capacity in patients with chronic heart failure.

Methods: We undertook a single-center cross-sectional study in a group of stable patients with chronic heart failure. At recruitment, patients provided baseline information and completed a 6-minute walk test to evaluate submaximal exercise capacity and exercise-induced symptoms. At the same time, blood samples were taken for serological evaluation. Iron deficiency was defined as ferritin < 100 ng/mL or transferrin saturation < 20% when ferritin is < 800 ng/mL. Additional markers of iron status were also measured.

Results: A total of 538 heart failure patients were eligible for inclusion, with an average age of 71 years and 33% were in New York Heart Association class III/IV. The mean distance walked in the test was 285 ± 101 meters among those with impaired iron status, vs 322 ± 113 meters ($P = .002$). Symptoms during the test were more frequent in iron deficiency patients (35% vs 27%; $P = .028$) and the most common symptom reported was fatigue. Multivariate logistic regression analyses showed that increased levels of soluble transferrin receptor indicating abnormal iron status were independently associated with advanced New York Heart Association class ($P < .05$). Multivariable analysis using generalized additive models, soluble transferrin receptor and ferritin index, both biomarkers measuring iron status, showed a significant, independent and linear association with submaximal exercise capacity ($P = .03$ for both). In contrast, hemoglobin levels were not significantly associated with 6-minute walk test distance in the multivariable analysis.

Conclusions: In patients with chronic heart failure, iron deficiency but not anemia was associated with impaired submaximal exercise capacity and symptomatic functional limitation.

© 2015 Sociedad Española de Cardiología. Published by Elsevier España, S.L.U. All rights reserved.

Estado del hierro en la insuficiencia cardíaca crónica: impacto en síntomas, clase funcional y capacidad de ejercicio submáxima

RESUMEN

Introducción y objetivos: Evaluar el efecto del déficit de hierro y la anemia en la capacidad de esfuerzo submáxima de pacientes con insuficiencia cardíaca crónica.

Métodos: Se llevó a cabo un estudio transversal unicéntrico en un grupo de pacientes estables con insuficiencia cardíaca crónica. En el momento de incluirlos en el estudio, los pacientes aportaron información basal y realizaron una prueba de marcha de 6 minutos para evaluar la capacidad de ejercicio submáxima y los síntomas desencadenados por el esfuerzo. Al mismo tiempo, se obtuvieron muestras de sangre para la evaluación serológica. El déficit de hierro se definió como un valor de ferritina < 100 ng/ml o una saturación de transferrina < 20% cuando la ferritina era < 800 ng/ml. Se efectuaron también determinaciones de otros marcadores del estado del hierro.

Resultados: Se consideró aptos para la inclusión en el estudio a 538 pacientes con insuficiencia cardíaca. La media de edad era 71 años y el 33% se encontraba en las clases III/IV de la *New York Heart Association*. La distancia media recorrida en la prueba de marcha de 6 minutos por los pacientes con alteración del estado del hierro fue 285 ± 101 m, en comparación con los 322 ± 113 m del otro grupo ($p = 0,002$). Los

Palabras clave:

Déficit de hierro

Insuficiencia cardíaca

Receptor de transferrina soluble

Capacidad de ejercicio submáxima

Prueba de 6 minutos de marcha

SEE RELATED ARTICLE:

<http://dx.doi.org/10.1016/j.rec.2015.11.019>, Rev Esp Cardiol. 2016;69:237–8.

* Corresponding author: Programa de Insuficiencia Cardíaca, Servicio de Cardiología, Hospital del Mar, Passeig Marítim 25-29, 08003 Barcelona, Spain.

E-mail address: cristinaenjuanes@gmail.com (C. Enjuanes).

<http://dx.doi.org/10.1016/j.rec.2015.08.018>

1885-5857/© 2015 Sociedad Española de Cardiología. Published by Elsevier España, S.L.U. All rights reserved.

síntomas durante la prueba fueron más frecuentes en los pacientes con déficit de hierro (el 35 frente al 27%; $p = 0,028$) y el síntoma registrado con más frecuencia fue la fatiga. Los análisis de regresión logística multivariantes mostraron que el aumento de la concentración de receptor de transferrina soluble, que indica un estado anormal del hierro, se asociaba de manera independiente con una clase avanzada de la *New York Heart Association* ($p < 0,05$). En el análisis multivariable realizado empleando modelos aditivos generalizados, el receptor de transferrina soluble y el índice de ferritina, biomarcadores que miden el estado del hierro, mostraron una asociación lineal, significativa e independiente con la capacidad de ejercicio submáxima ($p = 0,03$ en ambos casos). En cambio, en el análisis multivariable los valores de hemoglobina no mostraron una asociación significativa con la distancia recorrida en la prueba de marcha de 6 minutos.

Conclusiones: En los pacientes con insuficiencia cardíaca crónica, el déficit de hierro, pero no así la anemia, se asoció con deterioro de la capacidad de ejercicio submáxima y limitación funcional sintomática.

© 2015 Sociedad Española de Cardiología. Publicado por Elsevier España, S.L.U. Todos los derechos reservados.

Abbreviations

6MWT: 6-minute walk test
 CHF: chronic heart failure
 HRQoL: health-related quality of life
 ID: iron deficiency
 NYHA: New York Heart Association
 sTfR: serum soluble transferrin receptor

INTRODUCTION

Despite the introduction of new therapies and recent developments in the management of chronic heart failure (CHF), functional limitation and the presence of limiting symptoms are common in optimally treated patients. Dyspnea and fatigue are the main symptoms, leading to impaired exercise capacity.¹ These factors promote the inability to perform daily activities and impact patients' self-perceived health status. Thus, impaired health-related quality of life (HRQoL) and the occurrence of symptoms such as dyspnea or fatigue leading to advanced New York Heart Association (NYHA) functional class have become important patient-centered outcomes that need to be addressed.²

The objective assessment of functional status has been commonly undertaken by measuring peak exercise capacity using the cardiopulmonary gas exchange exercise test.³ However, functional limitations in performing daily activities imposed by CHF may also be estimated when submaximal exercise capacity is studied. As an alternative to the cardiopulmonary gas exchange exercise test, the 6-minute walk test (6MWT) or corridor test is an easy method to objectively measure patients' submaximal functional capacity and thus gain a more realistic insight into patients' ability to perform daily activities.^{4,5}

The underlying mechanisms of impaired exercise capacity in CHF are numerous and not fully understood. This may explain why therapeutic options with good impact on prognosis, such as beta-blockers, have failed to show benefits in terms of functional capacity.⁶ Recent evidence suggests that iron deficiency (ID) is a common comorbidity⁷ and may be associated with impaired peak exercise capacity,⁸ worse HRQoL,^{9,10} and poorer outcomes¹¹ in CHF patients, regardless of the presence of anemia. Furthermore, several trials have shown that intravenous iron administration can improve functional capacity and symptoms of patients with CHF and ID.^{12,13} Data from these studies suggest that iron status may play a role in submaximal exercise capacity. However, these studies focused only on selected patients with ID and thus had a limited power to assess the influence of iron status and/or the presence of anemia on submaximal exercise capacity and the occurrence of symptoms in a broader spectrum of patients. Therefore, we aimed to investigate the impact of iron status on

submaximal exercise capacity estimated with the distance walked in the 6MWT. We also wanted to explore the influence of iron status on NYHA functional class and the occurrence of symptoms in a cohort of CFH patients seen in daily clinical practice.¹⁴

METHODS

Study Population and Recruitment

For the purpose of this study, we analyzed the association of submaximal exercise capacity and iron/anemia status in a cohort of stable euvolemic patients with CHF. The methodology of this study has been previously reported.⁹ The study was conducted in accordance with the Declaration of Helsinki, the study protocol was approved by the local clinical research ethics committee, and all patients gave written informed consent after recruitment. For inclusion in the study, patients had to be in a stable condition and diagnosed with CHF with either reduced or preserved ($\geq 45\%$) LVEF (left ventricular ejection fraction), according to the European Society of Cardiology diagnostic criteria.¹⁵ Exclusion criteria for the study were: inability to perform the 6MWT, significant primary valvular disease, hemoglobin levels < 8.5 g/dL, clinical signs of fluid overload, pericardial disease, restrictive cardiomyopathy, hypertrophic cardiomyopathy, active malignancy, and chronic liver disease. Patients without iron status evaluation or 6MWT available at screening were also excluded. According to these criteria, the final cohort consisted of 538 patients. At recruitment, all patients provided peripheral blood samples and relevant clinical and demographic information, including NYHA functional class, current medical therapy, and the most recent LVEF evaluation.

Medical and nursing personnel involved in recruitment and data collection were blinded to patients' ID and anemia status.

Iron Status and Other Laboratory Measurements

Iron deficiency was defined using the Kidney Disease Outcomes Quality Initiative guidelines criteria: ferritin < 100 ng/mL or transferrin saturation (TSAT) $< 20\%$ when ferritin is < 800 ng/mL.¹⁶ Serum iron was measured using spectrophotometry; serum ferritin and transferrin were measured using immunoturbidimetry. The TSAT was estimated using the formula: $\text{TSAT} = \frac{\text{serum iron } (\mu\text{g/dL})}{[\text{serum transferrin } (\text{mg/dL}) \times 1.25]}$.¹⁷ Additional measures of iron status were: red cell distribution width,¹⁸ where values $> 15\%$ are indicative of ID anisocytosis, serum soluble transferrin receptor (sTfR) (measured using an enzyme immunoassay),¹⁹ and ferritin index. Ferritin index has been proposed as a useful tool in the diagnosis of ID states, where ratios > 2 suggest ID. The ferritin index is calculated by dividing sTfR (expressed in nmol/L or mg/L) by \log_{10} ferritin (measured in ng/mL) and is thus

increased whenever sTfR is raised and or ferritin is reduced.²⁰ Anemia was defined as hemoglobin level < 12 g/dL in women and < 13 g/dL in men.²¹ Hemoglobin was measured using impedance laser colorimetry. None of the patients were receiving blood transfusions, erythropoietin therapy, or intravenous iron therapy at the time of inclusion.

Submaximal Exercise Capacity

Submaximal exercise capacity was assessed using the 6MWT. Each patient performed a single 6MWT using a standardized protocol as described in previous studies and guidelines.²² The test was performed by a trained nurse who would ask the patient to walk the longest distance possible in an interval of 6 minutes across a 24-meter corridor. The patient could stop or slow down at any time and then resume walking, depending on the degree of fatigue. The exercise test was stopped at the patient's request. The total distance covered in 6 minutes, early interruption of the test, and the presence of symptoms during the test were reported. Symptoms including dyspnea, fatigue, angina, intermittent claudication, and low output symptoms (defined as fainting, weakness, and reduced blood pressure) were evaluated according to a questionnaire and reported at the end of the test. If several symptoms were reported, the most limiting was chosen. To classify patients into 2 exercise capacity categories (impaired or preserved), we chose a cutoff point of 300 meters. This threshold has been reported previously as a predictor of mortality and morbidity in CHF with left ventricular dysfunction.²³

Statistical Analyses

Demographic and other background data were summarized with basic descriptive statistics for iron status groups. For quantitative variables, arithmetic mean \pm standard deviation or median [interquartile range] were calculated as appropriate, and *p*-values were derived from a 2-sample Student *t* test (the Mann-Whitney U-test was used for skewed data). For qualitative variables, percentages within specified groups were calculated and *P*-values were derived using the chi-square test.

The preliminary analysis of functional capacity on impaired or nonimpaired iron status groups was performed using descriptive methods stated above.

The associations between submaximal exercise capacity (preserved, \geq 300 meters and impaired < 300 meters) in the 6MWT and baseline characteristics were evaluated with simple (univariate) unadjusted logistic regression analysis.

To explore the interactions between iron status and anemia on submaximal exercise capacity, several models were developed. These models were adjusted for covariates that showed a significant statistical association with functional capacity in the univariate analyses including age, sex, LVEF, heart rate, iron status, hemoglobin, hypertension, diabetes, chronic kidney disease, use of angiotensin converting-enzyme inhibitor or angiotensin II receptor antagonists, N-terminal pro-B-type natriuretic peptide (NT-proBNP) levels and C-reactive protein. The NYHA functional class is directly and strongly related to exercise intolerance in CHF patients and may be conceived as an alternative measure of submaximal exercise capacity.⁸ Thus, we prospectively decided to exclude NYHA from these models in which the distance walked in the 6MWT was the dependent variable.

We used generalized additive models to regress anemia and ID biomarkers on distance walked in 6MWT. Generalized additive models are a more flexible modelling approach which allow for non-linearity in the relationship and contribute to a more accurate exploration of continuous variables, providing a pattern which

reflects the shape and trend of the association. The *P*-value for non-parametric effect (non-linearity test) and *P*-value for the association were measured for all of them. The models were adjusted for the abovementioned covariates.

A logistic regression model (adjusted for the abovementioned covariates, including hemoglobin) was performed to explore the interaction of iron status and NYHA functional class.

All statistical tests and intervals of confidence were constructed with a type I error (alpha) level of 5% with no adjustments for multiplicity, and *P*-values \leq .05 were considered statistically significant. Analyses were done using R 2.15.1.

RESULTS

Up to 538 stable CHF patients were included and enrolled in the study. Table 1 displays the baseline clinical characteristics of the entire cohort according to iron status. Up to 45% of the patients were anemic. The ID was present in 329 (61%) patients in the total cohort. Advanced NYHA functional class (III or IV) was more common in patients with ID and anemia. The mean distance walked in the total cohort was 304 \pm 109 meters; 288 \pm 103 meters for preserved LVEF vs 319 \pm 112 meters for reduced LVEF, *P* = .001. The percentage of patients with impairment on submaximal exercise capacity (distance walked in 6MWT < 300 meters) was more prominent in those with abnormal iron status (Table 1). Up to 505 patients (94%) completed the test, and 125 (23%) stopped during the test and then resumed walking.

Patients with impaired iron status had worse submaximal exercise capacity in the unadjusted analysis (Figure 1 A). The mean distance covered during the 6-minute period was 285 \pm 101 meters in the ID group compared with 322 \pm 113 meters in patients with normal iron status (*P* < 0.005). Moreover, the percentage of individuals with impaired exercise capacity was higher in the abnormal iron status group (59% vs 43%; *P* < .001, respectively) (Figure 1 B) and advanced NYHA functional class was more prevalent in the ID group (26% vs 36%; *P* < .05, respectively) (Figure 1 C). Impaired iron status was significantly associated with the presence of symptoms during the 6MWT. Symptoms were more common in the abnormal iron status group than in non-ID patients (35% vs 27%; *P* < 0.05, respectively) (Figure 1 D). The most frequent symptom experienced was fatigue, which was significantly associated with iron status. No significant differences were observed in the other symptoms, including dyspnea.

To explore the association between submaximal exercise capacity and baseline characteristics, a univariate binary logistic regression analysis was used (Figure 2). Several factors were associated with worse submaximal exercise capacity including higher age, female sex, and comorbidities such as hypertension, diabetes, and chronic kidney disease. Anemia and ID such as high sTfR, low TSAT, high ferritin index, and red cell distribution width > 15% were also associated with impaired exercise capacity in the unadjusted analysis.

In multivariable generalized additive models, adjusted for the significant factors identified in the univariate analysis, abnormal iron status assessed by sTfR (*P* = .023) and ferritin index (*P* = .019) was significantly associated with worse submaximal exercise capacity, whereas hemoglobin was not (*P* = .61) (Table 2). Interestingly, when we analyzed the impact on exercise capacity of the elements of ID definition (TSAT and ferritin) separately, none of these factors showed significant association.

All generalized additive models fitted to explore the association of ID biomarkers (sTfR and ferritin index) and hemoglobin did not reveal a nonlinear component of the relationships with distance walked in the 6MWT (*P*-value for non-parametric effect: *P* = .16, *P* = .49 and *P* = .29, respectively), which means we cannot assume

Table 1
Baseline Characteristics According to Iron Status

	Iron status		P
	Preserved sTfR < 1.5 (n = 264)	Impaired sTfR ≥ 1.5 (n = 274)	
Age, y	71 ± 12	72 ± 11	.732
Female sex	101 (38)	104 (38)	.999
BMI	27 ± 6	29 ± 6	.005
SBP, mmHg	125 ± 24	123 ± 21	.168
Heart rate, bpm	72 ± 13	75 ± 14	.014
NYHA functional class			.002
I	71 (27)	42 (15)	
II	125 (47)	128 (47)	
III	62 (24)	94 (34)	
IV	6 (2)	10 (4)	
LVEF, %	45.8 ± 16	46.7 ± 17	.537
LVEF ≥ 45%	139 (53)	138 (50)	.657
Ischemic etiology of CHF	80 (30)	113 (41)	.011
Comorbidities			
Hypertension	207 (79)	225 (82)	.373
Diabetes mellitus	96 (37)	133 (49)	.007
CKD (eGFR < 60 mL/min/1.73 m ²)	108 (41)	149 (54)	.002
Medications			
ACE inhibitors or ARB	211 (80)	185 (67)	.002
BB	239 (90)	243 (89)	.576
MRA	101 (38)	87 (32)	.161
Digoxin	36 (14)	31 (11)	.492
Loop diuretics	229 (87)	253 (93)	.034
Laboratory values			
Hemoglobin, g/dL	13.0 ± 2	12.6 ± 2	.027
eGFR, mL/min/1.73 m ²	66 [51-81]	57 [42-70]	< .001
Ferritin, ng/ml	192.5 [105-313]	124.5 [59-226]	< .001
Transferrin, mg/dL	242 [216-269]	258 [227-303]	< .001
Serum iron, pg/dL	73 [55-97]	53 [41-72]	< .001
TSAT	26.6 ± 14	19.0 ± 12	< .001
Ferritin index	0.5 ± 0.1	1.2 ± 0.8	< .001
RDW > 15%	58 (22)	164 (60)	< .001
NT-proBNP, pg/mL	1281 [504-2909]	1621 [764-3694]	.009
C-reactive protein, mg/dL	0.5 [0.2-1.4]	0.8 [0.3-1.6]	.007
6MWT			
Meters walked	322.1 ± 113	285.9 ± 101	< .001
< 300 meters walked	114 (43)	162 (59)	< .001

6MWT: 6-minute walk test; ACE, angiotensin converting-enzyme; ARBs, angiotensin receptor blockers; BB, beta blockers; BMI, body mass index; CHF, chronic heart failure; CKD, chronic kidney disease; eGFR, estimated glomerular filtration rate; LVEF, left ventricle ejection fraction; MRAs, mineralocorticoid receptor antagonists; NT-proBNP, N-terminal pro-B type natriuretic peptide; NYHA, New York Heart Association; RDW, cell distribution width, SBP, systolic blood pressure; sTfR, serum soluble transferrin receptor; TSAT: transferrin saturation.

Data are expressed as No. (%), mean ± standard deviation or median [interquartile range].

Values of estimated glomerular filtration rate, ferritin, transferrin, serum iron, N-terminal pro-B type natriuretic peptide and C-reactive protein are compared using the Mann-Whitney test.

nonlinearity. However, the important issue of these models is the visual inspection of the plots. The pattern and the shape of the line reflect the trend of the association. This model also confirmed the strong association between iron biomarkers and submaximal exercise capacity ($P = .027$ and $P = .031$ respectively) whereas hemoglobin was not associated ($P = .642$). As represented in model 1 and 2 (Figure 3), lower exercise capacity was related to higher values of ID biomarkers (reflecting more ID).

In further multivariable modelling (Figure 4), we investigated the influence of sTfR divided in quintiles as a measure of iron status for advanced heart failure functional class. In this adjusted

analysis, more pronounced iron depletion, as represented by higher levels of sTfR, was associated with advanced NYHA class, and this association was independent of anemia.

DISCUSSION

The main novel finding of this descriptive study is that impairment of submaximal exercise capacity in CHF patients is associated with abnormal indices of iron metabolism, and this finding is independent of anemia status or hemoglobin. Impaired

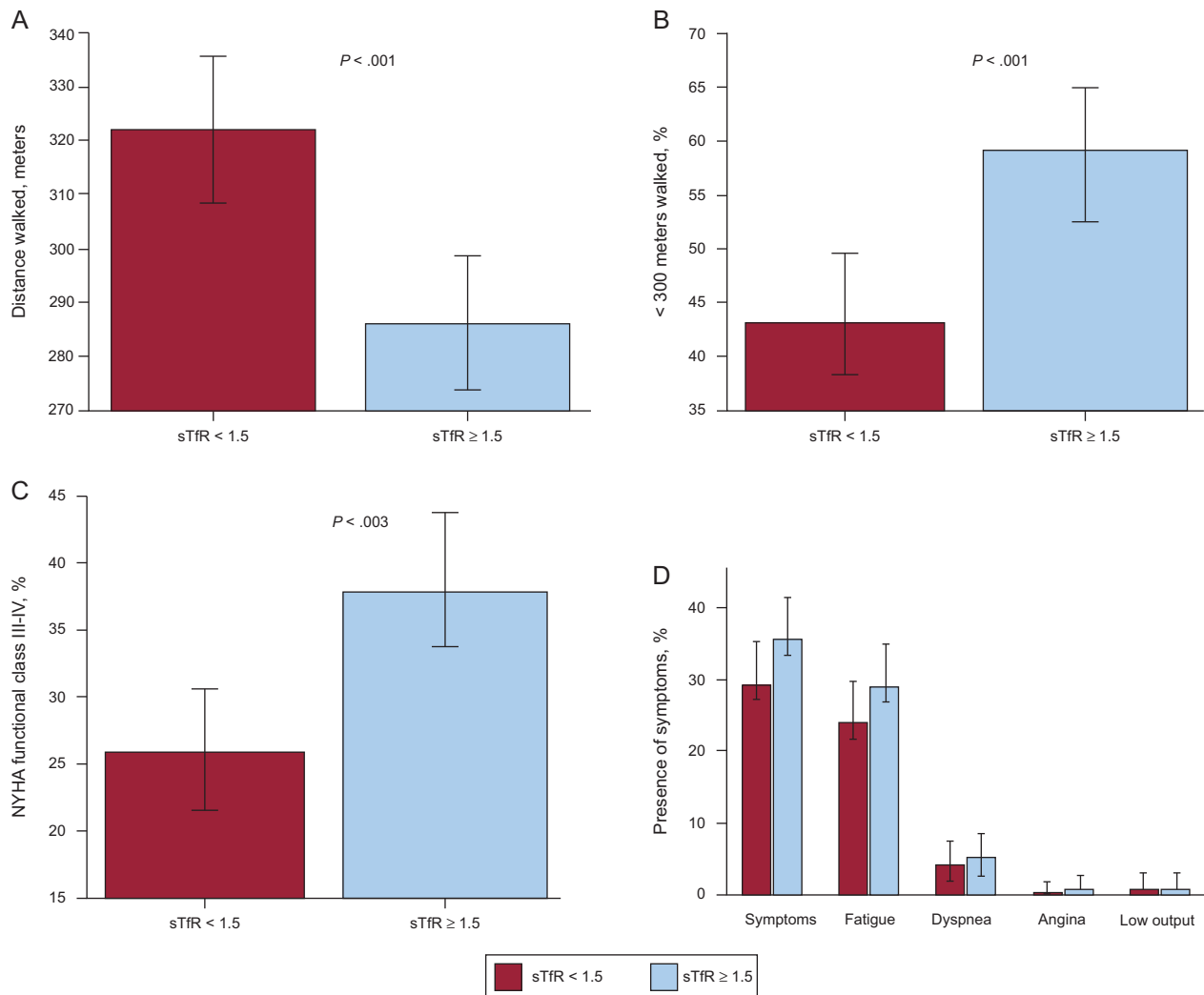


Figure 1. Associations between submaximal exercise capacity, New York Heart Association functional class and symptoms according to iron status. A: Distance walked in the 6-minute walk test. B: Percentage of patients with impaired submaximal exercise capacity. C: Percentage of patients with advanced New York Heart Association functional class (III-IV). D: Patients' reported symptoms during the 6-minute walk test. 6MWT, 6-minute walk test; NYHA, New York Heart Association; sTfR, serum soluble transferrin receptor.

maximal exercise capacity in ID patients with CHF has been previously described,⁸ using the cardiopulmonary gas exchange exercise test (measured with peak oxygen consumption); however, we evaluated a parameter which measures submaximal exercise capacity directly related to the patient's ability to perform daily activities and with implications for quality of life.

Furthermore, we have shown that ID patients report symptoms more frequently during submaximal exercise and that the predominant symptom is fatigue. Moreover, abnormal iron status was associated with advanced NYHA functional class and this association was independent of the presence of anemia on multivariable analysis.

Patients with CHF, despite optimal treatment,²⁴ have functional limitation, especially due to exercise intolerance. Cardinal symptoms in CHF are dyspnea and fatigue, but little is known about the exact mechanisms leading to them. In this regard, we observed that fatigue was the most frequent exercise-induced symptom in these patients and was more commonly reported in patients with abnormal iron status.

Iron deficiency has been recently noted as a new primary comorbidity in CHF patients with unfavorable effects in terms of prognosis,¹¹ HRQoL,^{9,10} and peak exercise capacity.⁸ Our data add further evidence of the primary role of iron on functional measures

of performance in patients with CHF. The assessment of the clinical condition in CHF patients can be easily done with the 6MWT, which also provides information on the ability to perform daily activities.

Our results showed a lineal association between ID biomarkers and submaximal exercise capacity. This type of association has been previously reported between iron deficiency and quality of life.⁹ Exercise intolerance is directly related to HRQoL in CHF patients.^{25,26} Recent evidence shows that ID is a key determinant of HRQoL in CHF patients^{9,10} and this association is well established with overall and physical dimension scores, irrespective of anemia status. In support of this association, our study provides the first evidence that ID itself predicts submaximal exercise capacity, reflecting inability to perform daily activities. Therefore, we can hypothesize that ID would impair submaximal exercise capacity and promote the presence of symptoms and secondarily affect the performance of daily activities, one of the major determining factors in HRQoL. However, it would be interesting to design new studies to confirm that the impact of ID on submaximal exercise capacity is the key element that connects ID with impaired HRQoL.

The definition of ID in CHF has not been totally validated and therefore we used a multiple biomarker strategy to better characterize iron status in CHF patients, as reported in previous

Variable	OR	95%CI
Age ≥ 75 years	4.36	3.04-6.29
Female gender	3.11	2.16-4.51
SBP < 120 mmHg	1.29	0.92-1.82
Heart rate > 70 bpm	1.59	1.12-2.26
BMI ≥ 30	1.06	0.74-1.53
NYHA functional class III-IV	3.62	2.46-5.40
LVEF ≥ 45%	1.51	1.08-2.13
Ischemic etiology of HF	1.29	0.91-1.85
Hypertension	3.39	2.14-5.50
Diabetes	2.03	1.43-2.88
Chronic kidney disease	2.83	2.00-4.03
ACE inhibitors or ARBs	0.45	0.30-0.67
Betablockers	0.65	0.37-1.15
MRAs	0.62	0.43-0.88
Digoxin	1.21	0.72-2.03
Loop diuretics	2.81	1.55-5.32
sTfR (median = 1.51 mg/l)	1.71	1.22-2.42
TSAT < 20%	1.85	1.31-2.61
Anaemia	2.00	1.42-2.83
RDW > 15%	2.66	1.87-3.81
Iron deficiency	1.51	1.07-2.15
Ferritin index (median = 0.70)	1.66	1.18-2.34
NT-proBNP (median = 1436 pg/ml)	2.07	1.47-2.93
CRP (median = 0.67 mg/dl)	2.76	1.94-3.95

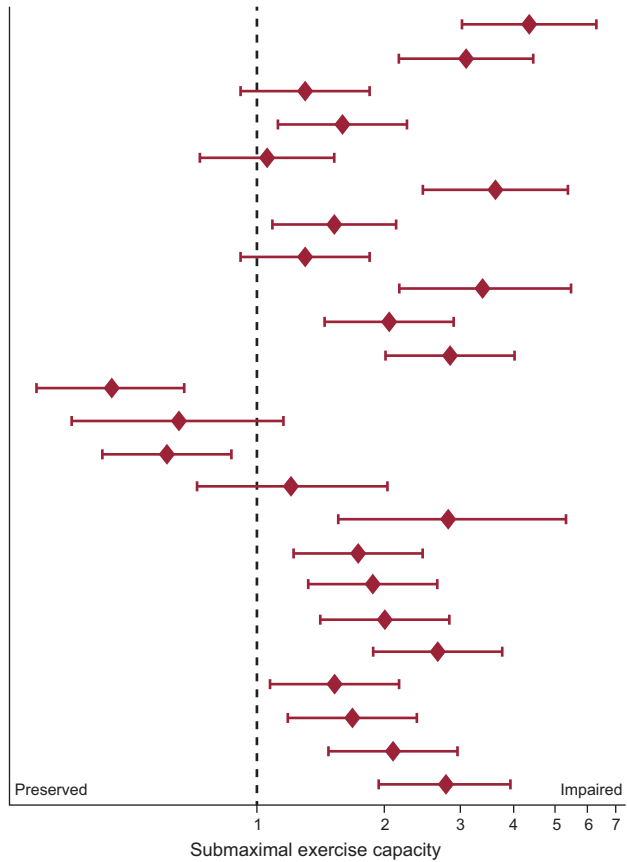


Figure 2. Clinical factors associated with impaired submaximal exercise capacity defined as 6-minute walk test distance < 300 meters (univariate logistic regression analyses). 6MWT, 6-minute walk test; 95%CI, 95% confidence interval; ACE, angiotensin converting-enzyme; ARB, angiotensin receptor blockers; BMI, body mass index; CRP: C-reactive protein; HF, heart failure; LVEF, left ventricular ejection fraction; MRAs, mineralocorticoid receptor antagonists; NT-proBNP, N-terminal pro-B type natriuretic peptide; NYHA, New York Heart Association; RDW, red cell distribution width; SBP, systolic blood pressure; sTfR, serum, soluble transferrin receptor; TSAT, transferrin saturation.

Table 2
Estimated Values of Different Iron Biomarkers and Hemoglobin Distributed According to the Distance Walked in the 6-minute Walk Test in Quintiles (Multivariate Analyses)

	Distance in the 6MWT (quintiles)					Coefficient (95%CI)	P
	1 (54-216 m)	2 (216-266 m)	3 (266-329 m)	4 (329-388 m)	5 (388-729 m)		
sTfR, mg/dL	2.11	1.87	1.77	1.69	1.47	-0.13 (-0.24 to -0.02)	.023
Log TSAT	2.93	2.87	3.03	2.96	3.13	0.00 (-0.03 to 0.04)	.864
Log ferritin, ng/ml	2.11	2.17	2.18	2.12	2.20	0.00 (-0.03 to 0.03)	.985
Ferritin index	1.03	0.94	0.86	0.85	0.72	-0.06 (-0.11 to -0.01)	.019
Hemoglobin, g/dL	12.14	12.42	12.95	13.17	13.47	0.03 (-0.10 to 0.17)	.618

6MWT, 6-minute walk test; 95%CI, 95% confidence interval; sTfR, serum soluble transferrin receptor; TSAT, transferrin saturation. All models were adjusted for age, sex, heart rate, left ventricular ejection fraction, hypertension, diabetes, chronic kidney disease, treatment with angiotensin converting-enzyme inhibitors or angiotensin receptor blockers, logarithm of N-terminal pro-B type natriuretic peptide and logarithm of C-reactive protein. Iron status biomarkers have been adjusted as well as for hemoglobin, whereas the fifth model (hemoglobin) has been adjusted for serum soluble transferrin receptor as a measure of iron status.

studies.⁹ We additionally used other parameters to evaluate iron status such as sTfR and ferritin index. These 2 biomarkers allow an accurate description of iron status in patients with chronic inflammatory conditions such as CHF. In adjusted analysis, we found that impaired submaximal exercise capacity, but not hemoglobin, correlated strongly with sTfR and ferritin index ($P < .05$ for both) (Figure 3), suggesting that iron depletion and anaemia is a key determinant of submaximal exercise performance. Interestingly, when we analyzed the impact on exercise capacity of the elements of ID definition separately (TSAT and ferritin), none

of these factors showed a significant association. These results confirm the importance of using different parameters simultaneously to assess the effect of ID on CHF and of using more sophisticated ID parameters such as sTfR to reflect iron status as a spectrum of severity of iron depletion.

Measurement of sTfR has been shown to be a good marker of ID; however a cutoff point has not been well established in CHF patients. In this regard, when we analyzed the curve of the interaction between sTfR and exercise capacity in meters (generalized additive models), we interestingly observed that

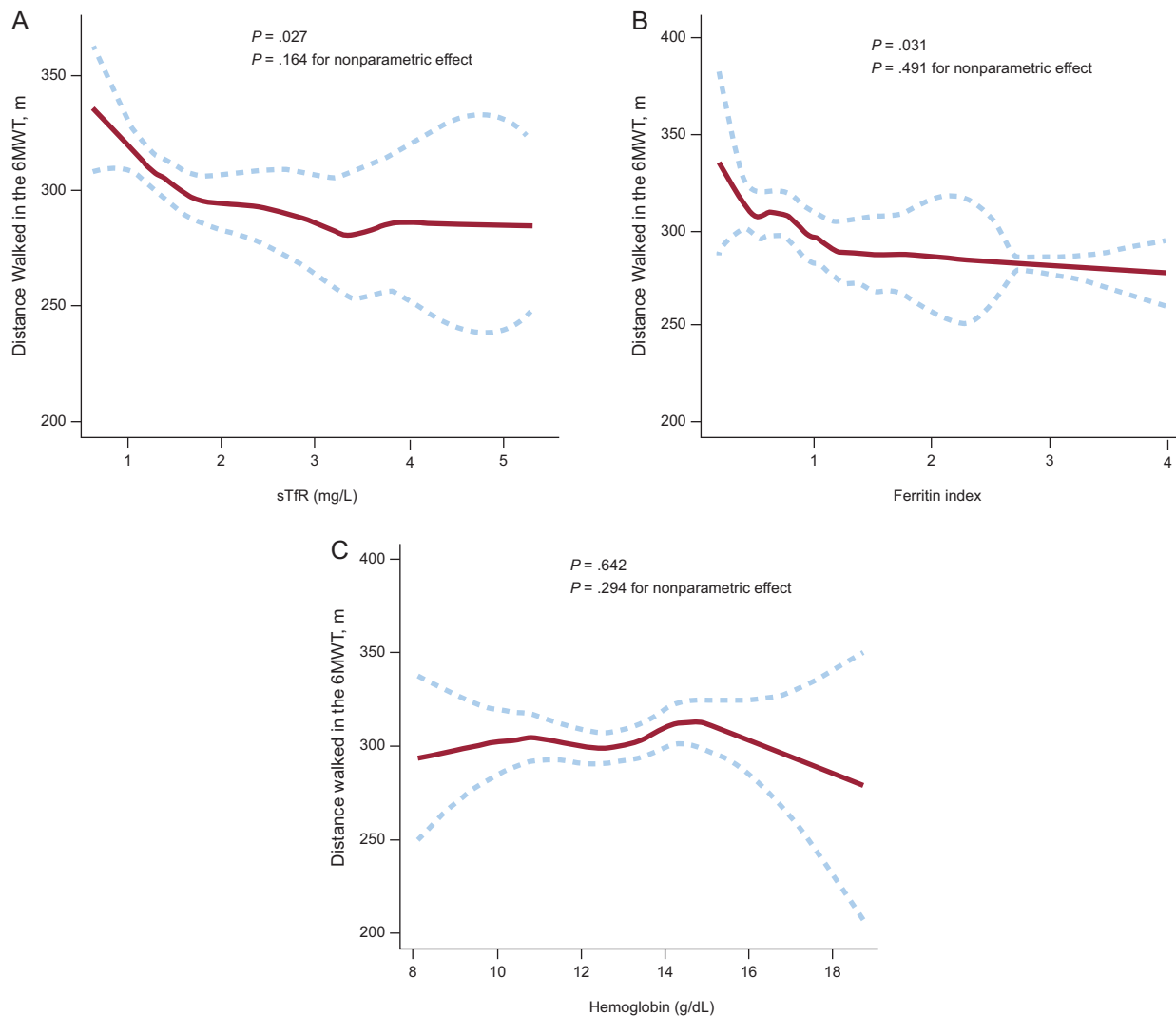


Figure 3. Multivariate analysis using generalized additive models to evaluate the relationship between iron deficiency biomarkers (A and B), hemoglobin (C) and the distance walked in the 6-minute walk test in meters. 6MWT: 6-minute walk test; sTfR, serum soluble transferrin receptor. Dotted curves indicate 95% confidence interval for the smoothed hazard.

the turning point of 300 meters corresponded to a value of 1.6 mg/L for sTfR, which is close to some values previously described²⁷ in advanced CHF patients (assessed by NYHA functional class) with ID.

One hypothesis to explain this datum, which has been previously reported,^{9,10} is that anemia is merely an indicator of greater ID. Iron plays an essential role in the oxygen transport, oxygen storage, oxidative enzymes, and respiratory chain proteins involved in skeletal and heart muscle energy metabolism.²⁸ The effects of ID are not only due to the role of iron on erythropoiesis.²⁹ To understand the role of iron on the presence of symptoms and functional impairment, tissue ID and oxygen transport deficiency should be considered separately. Experimental evidence suggests that iron itself improves muscle function and exercise capacity in animals,³⁰ and these findings emphasize the role of iron as a cofactor in skeletal and cardiac muscle function. Some authors support the hypothesis that ID may be behind mitochondrial dysfunction.²⁹

Additionally, and in support of this hypothesis, there is evidence on the effect of intravenous iron supplementation on ID anemic and nonanemic patients with CHF, increasing 6MWT distance, and improving functional capacity (NYHA functional class) and overall quality of life.^{12,25} There are also new data from an interventional

study evaluating the benefits of intravenous iron therapy on ID patients,¹³ showing an improvement on functional capacity, symptoms and HRQoL, which supports our hypothesis and results. However, the effects of iron supplementation directly on CHF specific symptoms such as fatigue or dyspnea have not yet been investigated.

Limitations

This study has several limitations that need to be mentioned. First of all, the distance walked in the 6MWT may vary according to the patient's motivation or other individual factors. This is a cross-sectional study and thus iron status and submaximal exercise capacity were only measured at a single moment and information about changes in time cannot be provided, so that a causal relationship cannot be established. Since this is a single center study, the applicability of our finding to other countries and ethnicities is unclear. Patients who were unable to perform the 6MWT were not included in the study; therefore, the association of ID and severe functional impairment will merit further evaluation.

A more detailed understanding of the integrated pathophysiology underlying the complex interaction between exercise response

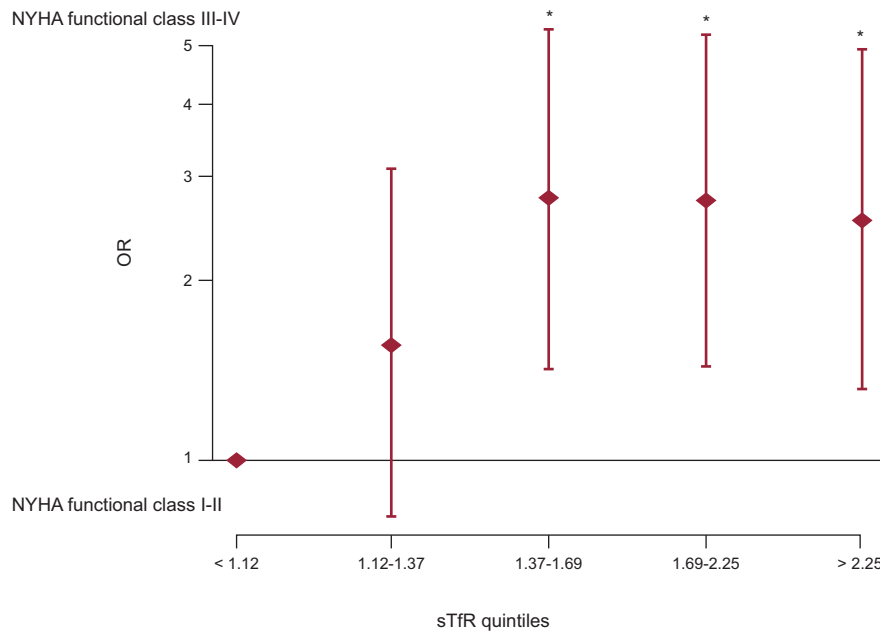


Figure 4. Multivariate binary logistic regression model to evaluate the influence of iron status (estimated with levels of serum soluble transferrin receptor) on advanced New York Heart Association functional class (III or IV). NYHA, New York Heart Association; OR: odds ratio; sTfR, serum soluble transferrin receptor. $P < 0.05$.

and ID in CHF patients is needed. However, the contribution of ID to the generation of symptoms in CHF establishes iron as a potential treatment for patients, so that clinical evaluation with the 6MWT should be performed and could help in the decision to treat patients with proven submaximal impaired exercise capacity.

CONCLUSIONS

Patients with CHF and abnormal iron status have impaired submaximal exercise capacity irrespective of hemoglobin. This could explain the link between impaired HRQoL and ID in CHF patients. Consequently, assessment of iron status in patients with CHF may complete information about clinical status and may help to define the therapeutic plan.

FUNDING

Statistical support was funded by Vifor Pharma Ltd, Switzerland.

CONFLICTS OF INTEREST

J. Comin-Colet was a member of the FAIR-HF (Ferinject® Assessment in patients with Iron deficiency and chronic Heart Failure) and CONFIRM-HF (Ferric Carboxymaltose evaluation on performance in patients with IRon deficiency in coMBination with chronic Heart Failure) steering committees and has received honoraria for speaking for Vifor Pharma Ltd.

REFERENCES

- Coats AJ, Clark AL, Piepoli M, Volterrani M, Poole-Wilson PA. Symptoms and quality of life in heart failure: the muscle hypothesis. *Br Heart J*. 1994;72(2 Suppl):S36–9.
- Hoekstra T, Jaarsma T, Van Veldhuisen DJ, Hillege HL, Sanderman R, Lesman-Leegte I. Quality of life and survival in patients with heart failure. *Eur J Heart Fail*. 2013;15:94–102.

- Janicki JS, Weber KT, McElroy PA. Use of the cardiopulmonary exercise test to evaluate the patient with chronic heart failure. *Eur Heart J*. 1988;9 Suppl H:55–8.
- Myers J, Zaheer N, Quaglietti S, Madhavan R, Froelicher V, Heidenreich P. Association of functional and health status measures in heart failure. *J Card Fail*. 2006;12:439–45.
- Guyatt GH, Sullivan MJ, Thompson PJ, Fallen EL, Pugsley SO, Taylor DW, et al. The 6-minute walk: a new measure of exercise capacity in patients with chronic heart failure. *Can Med Assoc J*. 1985;132:919–23.
- Packer M, Bristow MR, Cohn JN, Colucci WS, Fowler MB, Gilbert EM, et al. The effect of carvedilol on morbidity and mortality in patients with chronic heart failure. U.S. Carvedilol Heart Failure Study Group. *N Engl J Med*. 1996;334:1349–55.
- Klip IT, Comin-Colet J, Voors AA, Ponikowski P, Enjuanes C, Banasiak W, et al. Iron deficiency in chronic heart failure: an international pooled analysis. *Am Heart J*. 2013;165:575–82.
- Jankowska EA, Rozentryt P, Witkowska A, Nowak J, Hartmann O, Ponikowska B, et al. Iron deficiency predicts impaired exercise capacity in patients with systolic chronic heart failure. *J Card Fail*. 2011;17:899–906.
- Comin-Colet J, Enjuanes C, González-Robledo G, Torrens A, Cladellas M, Meroño O, et al. Iron deficiency is a key determinant of health-related quality of life in patients with chronic heart failure regardless of anaemia status. *Eur J Heart Fail*. 2013;15:1164–72.
- Enjuanes C, Klip IT, Bruguera J, Cladellas M, Ponikowski P, Banasiak W, et al. Iron deficiency and health-related quality of life in chronic heart failure: results from a multicenter European study. *Int J Cardiol*. 2014;174:268–75.
- Jankowska EA, Rozentryt P, Witkowska A, Nowak J, Hartmann O, Ponikowska B, et al. Iron deficiency: an ominous sign in patients with systolic chronic heart failure. *Eur Heart J*. 2010;31:1872–80.
- Anker SD, Comin CJ, Filippatos G, Willenheimer R, Dickstein K, Drexler H, et al. Ferric carboxymaltose in patients with heart failure and iron deficiency. *N Engl J Med*. 2009;361:2436–48.
- Ponikowski P, Van Veldhuisen DJ, Comin-Colet J, Ertl G, Komajda M, Mareev V, et al. Beneficial effects of long-term intravenous iron therapy with ferric carboxymaltose in patients with symptomatic heart failure and iron deficiency. *Eur Heart J*. 2014;36:657–68.
- Comin-Colet J, Verdú-Rotellar JM, Vela E, Cléries M, Bustins M, Mendoza L, et al. Eficacia de un programa integrado hospital-atención primaria para la insuficiencia cardiaca: análisis poblacional sobre 56.742 pacientes. *Rev Esp Cardiol*. 2014;67:283–93.
- McMurray JJ, Adamopoulos S, Anker SD, Auricchio A, Böhm M, Dickstein K, et al. ESC Guidelines for the diagnosis and treatment of acute and chronic heart failure 2012: The Task Force for the Diagnosis and Treatment of Acute and Chronic Heart Failure 2012 of the European Society of Cardiology. Developed in collaboration with the Heart Failure Association (HFA) of the ESC. *Eur Heart J*. 2012;33:1787–847.
- KDOQI Clinical Practice Guideline and Clinical Practice Recommendations for anemia in chronic kidney disease: 2007 update of hemoglobin target. *Am J Kidney Dis*. 2007;50:471–530.

17. Wu A. Tietz clinical guide to laboratory test. 4th ed. Sant Louis: Saunders Elsevier; 2006. p. 56–61.
18. Brugnara C, Mohandas N. Red cell indices in classification and treatment of anemias: from M.M. Wintrob's original 1934 classification to the third millennium. *Curr Opin Hematol.* 2013;20:222–30.
19. Goodnough LT, Nemeth E, Ganz T. Detection, evaluation, and management of iron-restricted erythropoiesis. *Blood.* 2010;116:4754–61.
20. Rimon E, Levy S, Sapir A, Gelzer G, Peled R, Ergas D, et al. Diagnosis of iron deficiency anemia in the elderly by transferrin receptor-ferritin index. *Arch Intern Med.* 2002;162:445–9.
21. Nutritional anaemias. Report of a WHO scientific group. *World Health Organ Tech Rep Ser.* 1968;405:5–37.
22. ATS Committee on Proficiency Standards for Clinical Pulmonary Function Laboratories. ATS statement: guidelines for the six-minute walk test. *Am J Respir Crit Care Med.* 2002;166:111–7.
23. Bittner V, Weiner DH, Yusuf S, Rogers WJ, McIntyre KM, Bangdiwala SI, et al; SOLVD Investigators. Prediction of mortality and morbidity with a 6-minute walk test in patients with left ventricular dysfunction. *JAMA.* 1993;270:1702–7.
24. Anguita M, Comín-Colet J, Formiga F, Almernar L, Crespo-Leiro M, Manzano L, et al. Tratamiento de la insuficiencia cardiaca con función sistólica deprimida: situación actual en España. Resultados del estudio VIDA-IC. *Rev Esp Cardiol.* 2014;67:769–70.
25. Gutzwiller FS, Pfeil AM, Comín-Colet J, Ponikowski P, Filippatos G, Mori C, et al. Determinants of quality of life of patients with heart failure and iron deficiency treated with ferric carboxymaltose: FAIR-HF sub-analysis. *Int J Cardiol.* 2013;168:3878–83.
26. Lord SR, Menz HB. Physiologic, psychologic, and health predictors of 6-minute walk performance in older people. *Arch Phys Med Rehabil.* 2002;83:907–11.
27. Jankowska EA, Malyszko J, Ardehali H, Koc-Zorawska E, Banasiak W, Von Haehling S, et al. Iron status in patients with chronic heart failure. *Eur Heart J.* 2013;34:827–34.
28. Maeder MT, Khammy O, Dos Remedios C, Kaye DM. Myocardial and systemic iron depletion in heart failure implications for anemia accompanying heart failure. *J Am Coll Cardiol.* 2011;58:474–80.
29. Jankowska EA, Von Haehling S, Anker SD, Macdougall IC, Ponikowski P. Iron deficiency and heart failure: diagnostic dilemmas and therapeutic perspectives. *Eur Heart J.* 2013;34:816–29.
30. Willis WT, Gohil K, Brooks GA, Dallman PR. Iron deficiency: improved exercise performance within 15 hours of iron treatment in rats. *J Nutr.* 1990;120:909–16.